

Kasbah Resources Limited

ASX : KAS

International Tin Conference - Vancouver

The Achmmach Tin Project



DISCLAIMER



Certain oral and written statements contained or incorporated by reference in this presentation, including information as to the future financial or operating performance of the Company and its projects, constitute forward-looking statements. All statements, other than statements of historical fact, are forward-looking statements. The words "believe", "expect", "anticipate", "contemplate", "target", "plan", "intend", "continue", "budget", "estimate", "may", "will", "schedule" and similar expressions identify forward-looking statements.

Forward-looking statements include, among other things, statements regarding targets, estimates and assumptions in respect of nickel or other metal production and prices, operating costs and results, capital expenditures, mineral reserves and mineral resources and anticipated grades and recovery rates. Forward-looking statements are necessarily based upon a number of estimates and assumptions related to future business, economic, market, political, social and other conditions that, while considered reasonable by the Company, are inherently subject to significant uncertainties and contingencies.

Many known and unknown factors could cause actual events or results to differ materially from estimated or anticipated events or results reflected in such forward-looking statements. Such factors include, but are not limited to: competition; mineral prices; ability to meet additional funding requirements; exploration, development and operating risks; uninsurable risks; uncertainties inherent in ore reserve and resource estimates; dependence on third party smelting facilities; factors associated with foreign operations and related regulatory risks; environmental regulation and liability; currency risks; effects of inflation on results of operations; factors relating to title to properties; native title and aboriginal heritage issues; dependence on key personnel; and share price volatility and also include unanticipated and unusual events, many of which are beyond the Company's ability to control or predict.

For further information, please see the Company's most recent annual financial statement, a copy of which can be obtained from the Company on request or at the Company's website: www.kasbahresources.com.

The Company disclaims any intent or obligation to update any forward-looking statements, whether as a result of new information, future events or results or otherwise. All forward-looking statements made in this presentation are qualified by the foregoing cautionary statements. Investors are cautioned that forward-looking statements are not guarantees of future performance and, accordingly, not to put undue reliance on such statements.

COMPETENT PERSON'S STATEMENT

The information in this report is based on information compiled by Mr. Jeffrey Lindhorst a Member of the Australasian Institute of Geoscientists. Mr. Lindhorst is a full-time employee of Kasbah Resources Limited and has sufficient experience which is relevant to the style of mineralisation and type of deposit under consideration and to the activity which he is undertaking to qualify as a Competent Person as defined in the 2004 Edition of the 'Australasian Code for Reporting of Exploration Results, Mineral Resources and Ore Reserves'. Mr. Lindhorst consents to the inclusion in the report of the matters based on this information in the form and context in which it appears. The information on the Achmmach Mineral Resource contained in this release is based on data compiled by Dr S Carras of Carras Mining Pty Ltd, a Fellow of the Australasian Institute of Mining and Metallurgy who has been involved in resource estimation for over 30 years.

Dr Carras has experience which is relevant to the style of mineralisation and type of deposit under consideration and in the activity he is undertaking to qualify as a Competent Person as defined in the 2004 Edition of the "Australian Code for Reporting of Exploration Results, Mineral Resources and Ore Reserves" and consents to the inclusion of the information in the form and context in which it appears.

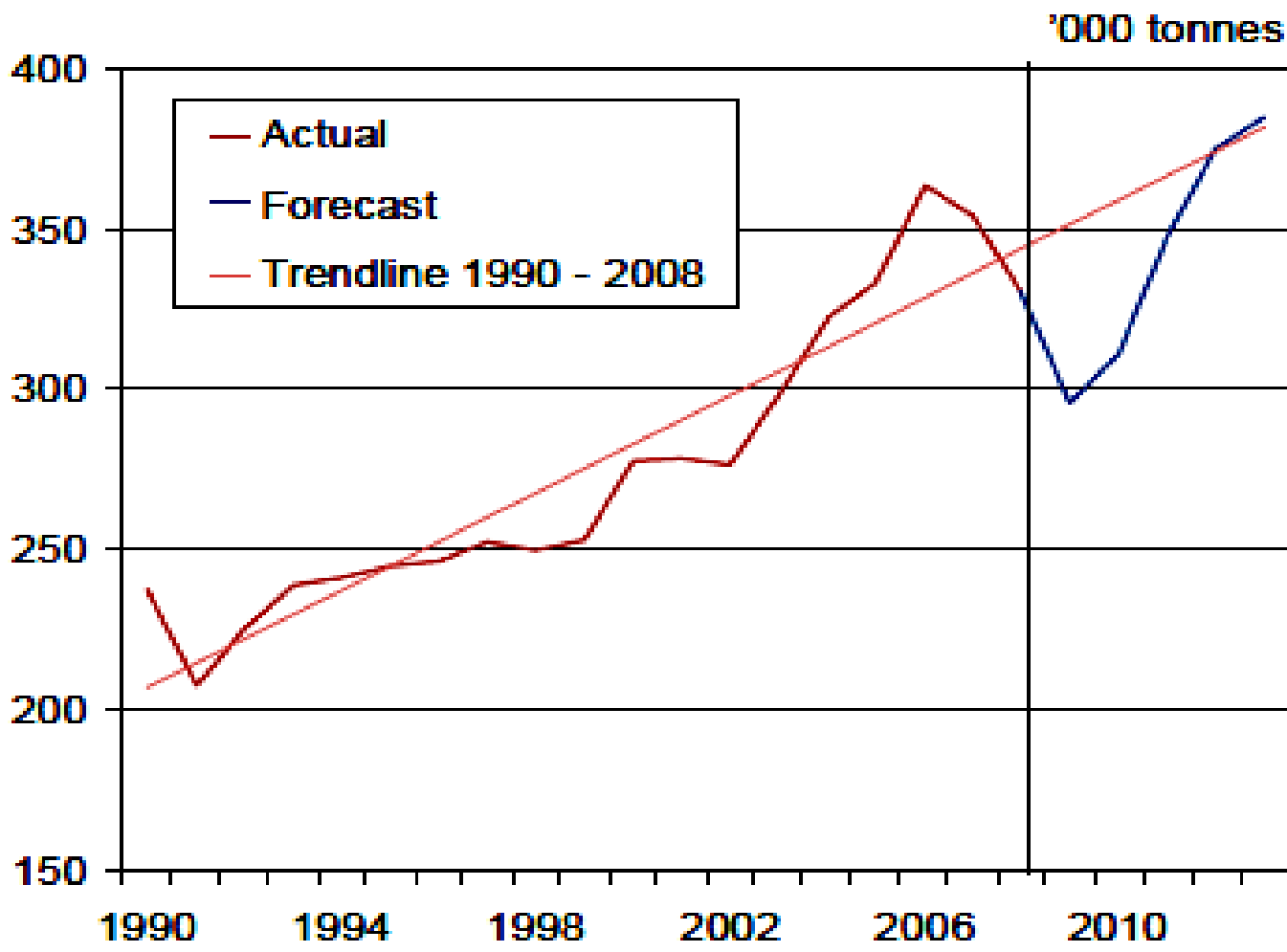
Q.

ARE NEW TIN PROJECTS REQUIRED ?



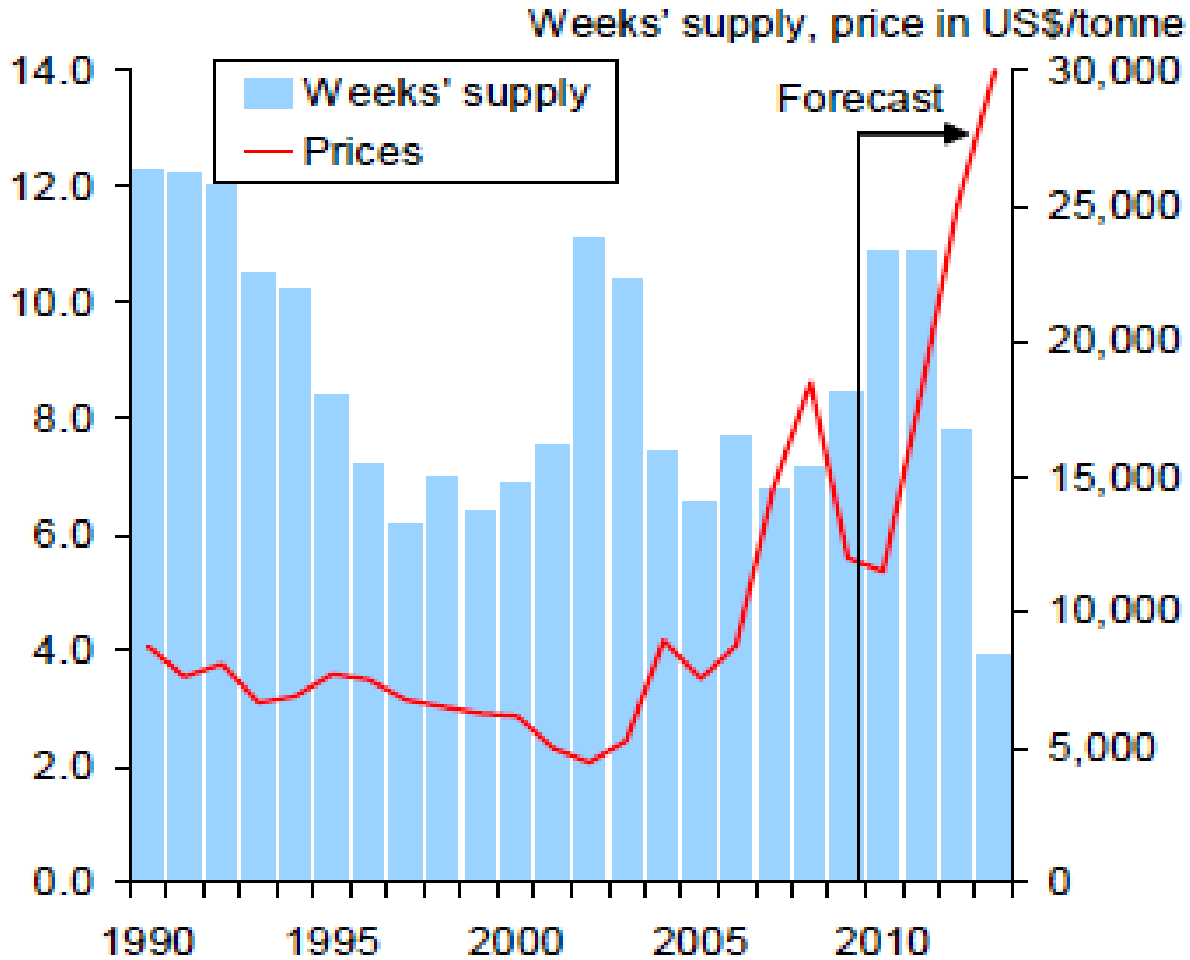
THE TIN MARKET – Demand Recovering

World consumption forecast



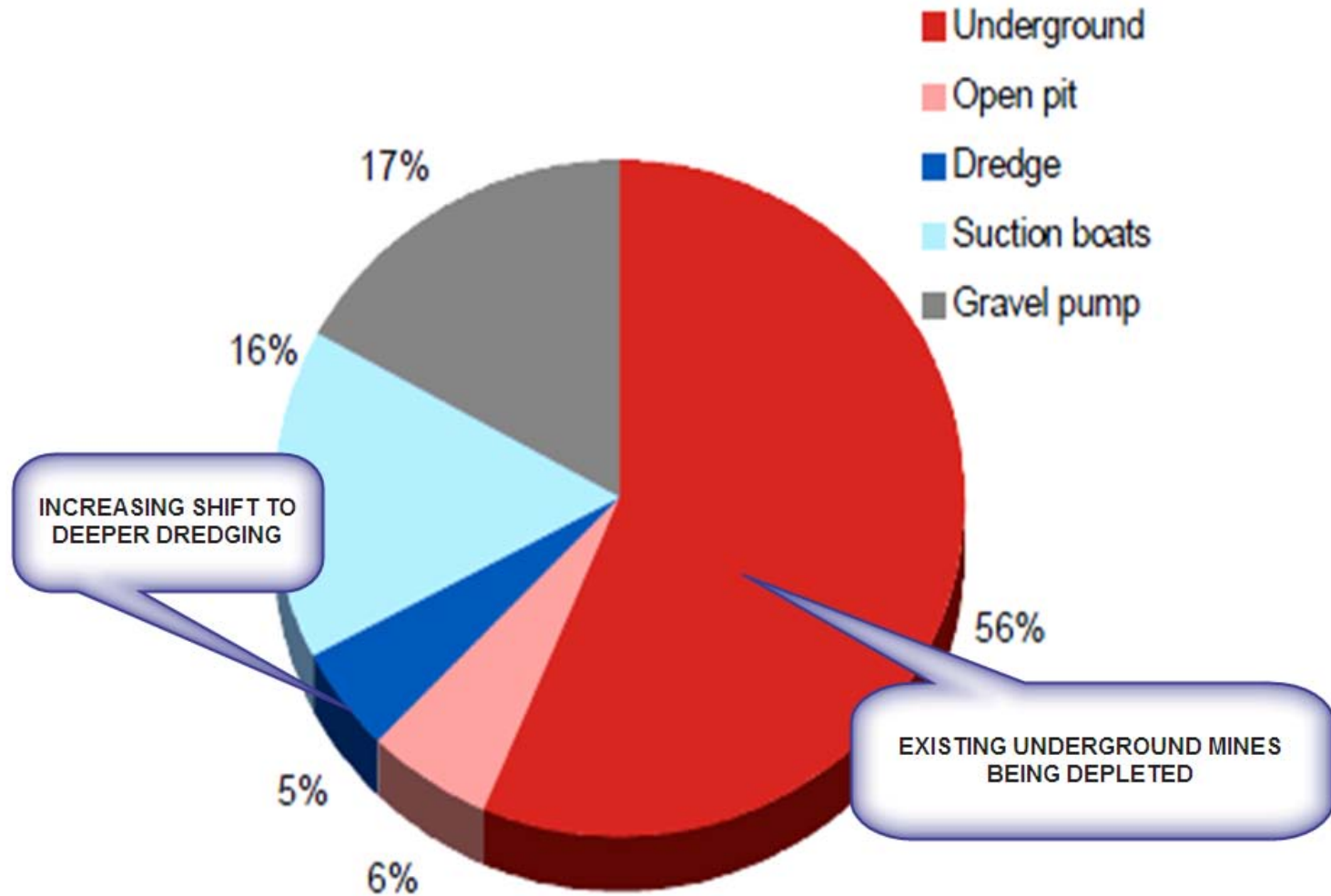
THE TIN MARKET – Supply concerns growing

Forecast weeks' supply and prices



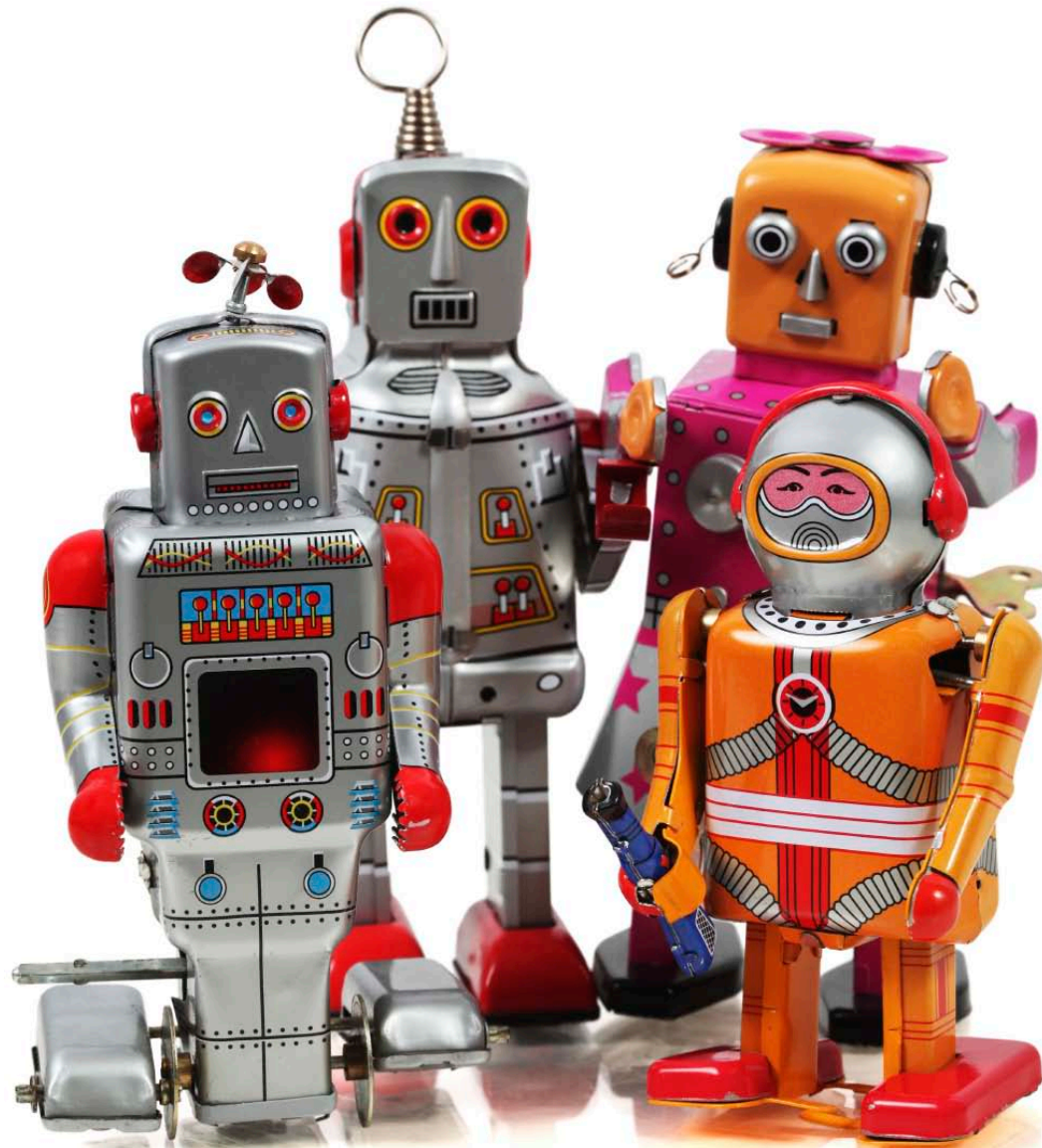
EXISTING TIN PRODUCERS – Going Up The Cost Curve

World mine production by method



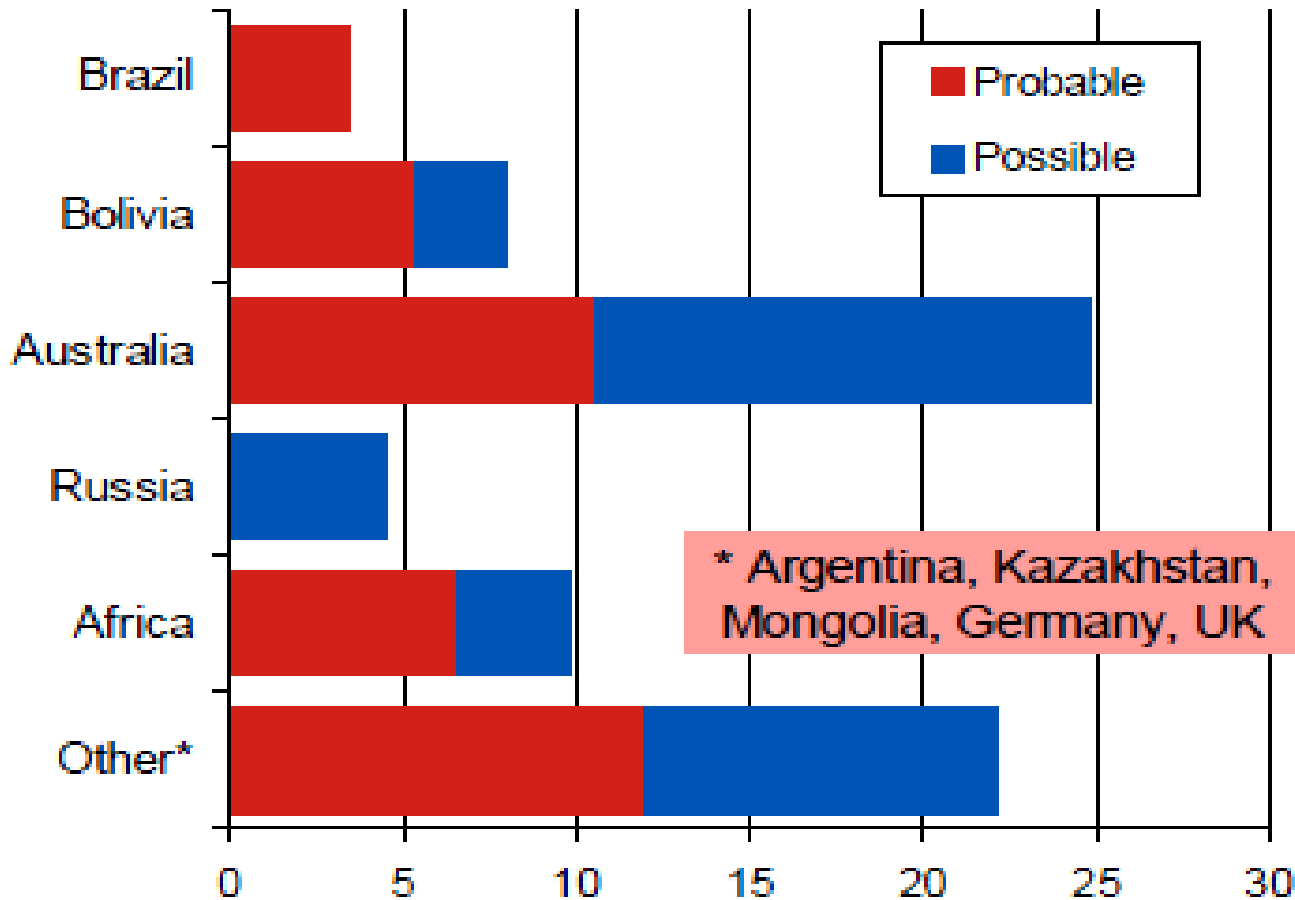
Q.

EMERGING PRODUCERS – WHO IS OUT THERE ?



Locations of potential new mine capacity by 2013

'000 tonnes per year



RESOURCES AINT RESOURCES – JORC & NI 43 -101

Main defined undeveloped tin resources

Company	Deposit	Country	Resource estimate		
			000 tonnes ore	%Sn	Sn contained
Syrymbet	Syrymbet	Kazakhstan	11,000	0.90	98,500
Metals X	Rentails	Australia	18,176	0.42	76,600
Brett Resources	Sleitat	USA	25,900	0.30	75,000
Silver Standard	Pirquitas	USA	40,200	0.18	72,100
New England Tin	Taronga	Australia	46,800	0.15	67,860
Sinchi Wayra	Colquiri t	Bolivia	11,000	0.60	66,000
Adex Mining	Mount Pl	Canada	18,483	0.34	63,500
Millhouse Capital	Shtokver	Russia	27,000	0.23	62,000
Deutsche Rohstoff	Gottesbe	Germany	15,000	0.40	60,000
Amerilangui Ujin	Narsiin K	Mongolia	7,300	0.78	57,000
Kasbah Resources	Achmma	Mongolia	6,000	0.90	52,000
Stellar Resources	Heemsk	Australia	7,300	0.69	50,370
Venture Minerals	Mount Li	Australia	23,000	0.20	49,000
Deutsche Rohstoff	Geyer	Germany	8,200	0.56	46,000
Western United Mines	South Cr	Australia	3,000	1.46	45,000
Consolidated Tin Mines	Mt Garne	Australia	5,300	0.60	31,800
Czvetmet Holding	Yenisey	Russia	1,700	1.50	25,000
YTC Resources	Doradilla	Chile	7,810	0.28	22,300
Outback Metals	Maranboy	Indonesia	722	2.03	14,600
Cluff Resources	Ardlethan	Australia	3,025	0.42	12,700
Outback Metals	Mt Wells	Australia	1,137	0.97	11,770
Total			288,053	0.37	1,059,100

Data: Company reports, ITRI estimates

Q.

WHY MOROCCO, ACHMMACH & KASBAH?



10 Competitive Advantages - MOROCCO, ACHMMACH & KASBAH

ACHMMACH

- ❑ Experienced development team
- ❑ Clean cassiterite (SnO₂)
- ❑ High grade tin (0.9% Sn diluted)
- ❑ Granted Mining Permits
- ❑ JORC Resource & growing
- ❑ Project scale is meaningful
- ❑ Simple metallurgy
- ❑ 75-80% tin recovery
- ❑ Low operating cost
- ❑ Low investment & sovereign risk

COMPETITORS

- ❑ ?
- ❑ Polymetallics & tin equivalents ?
- ❑ Low grade (0.4% Sn non-diluted) (ITRI 09)
- ❑ Exploration licenses ?
- ❑ Few JORC / 43-101 classified resources
- ❑ Small scale = high risk
- ❑ Complex metallurgy = low recovery
- ❑ >30-40% recovery
- ❑ Complexity increases operating costs
- ❑ Investment & sovereign risk?

THE KASBAH TEAM – Making it Happen

BOARD & MANAGEMENT

Non-Executive Chairman	Graeme Walker	+30 years, finance & corporate
Managing Director	Wayne Bramwell	+19 years, project management
Non-Exec Director	Dr Rod Marston	+35 years, geology
Non-Exec Director	Dr Rob Weinberg	+30 years, geology & corporate
CFO	Trevor Hart	+18 years, accounting
Country Manager	Chris Bolger	+30 years, geology & mining
Development Manager	Mike Kitney	+35 years, process, study & operations management



KASBAH SHAREHOLDERS – Industry Heavyweights

Major Shareholders

Founders & Directors 8.0 %

Institutional Investors

African Lion 2 Fund 9.5 %

Resource Capital Fund 9.5 %

Traxys Projects 6.9 %

Societe Generale 6.3 %

Thaisarco 3.1 %

@ 30/04 Top 20 Hold 66 %

ASX code

KAS

Shares on Issue

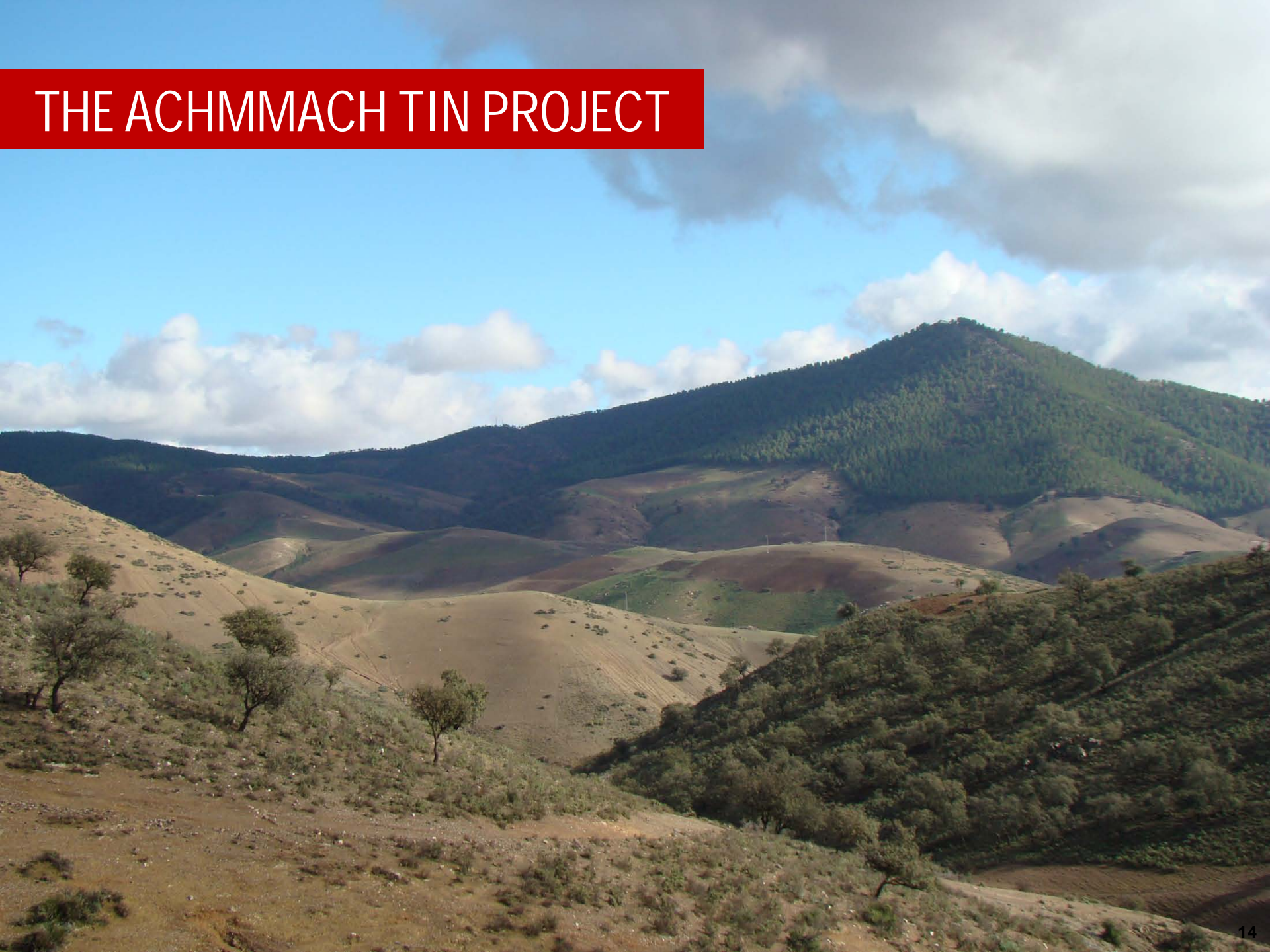
190M

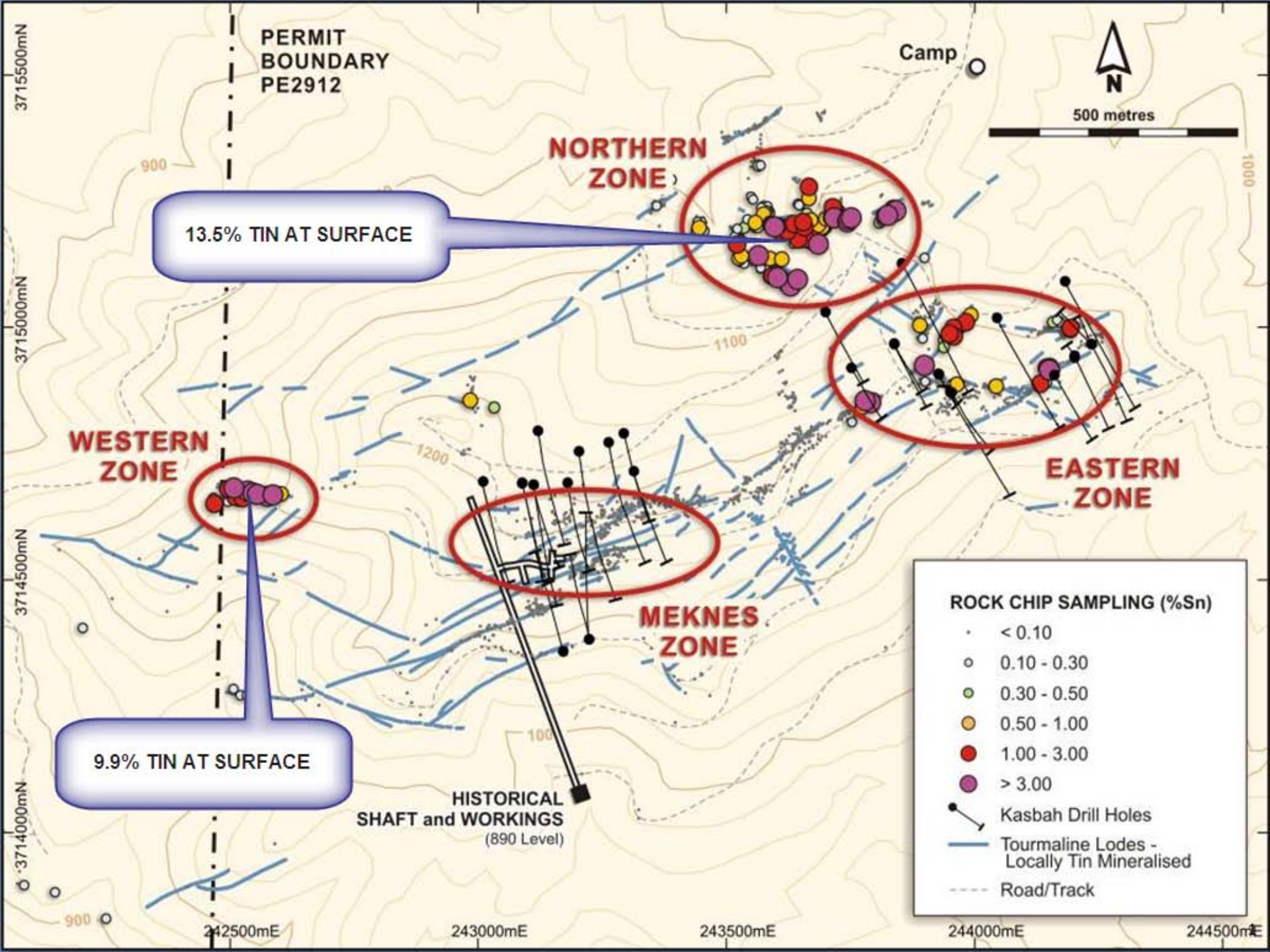
Market Cap

A\$19M

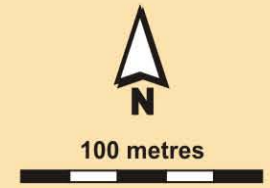
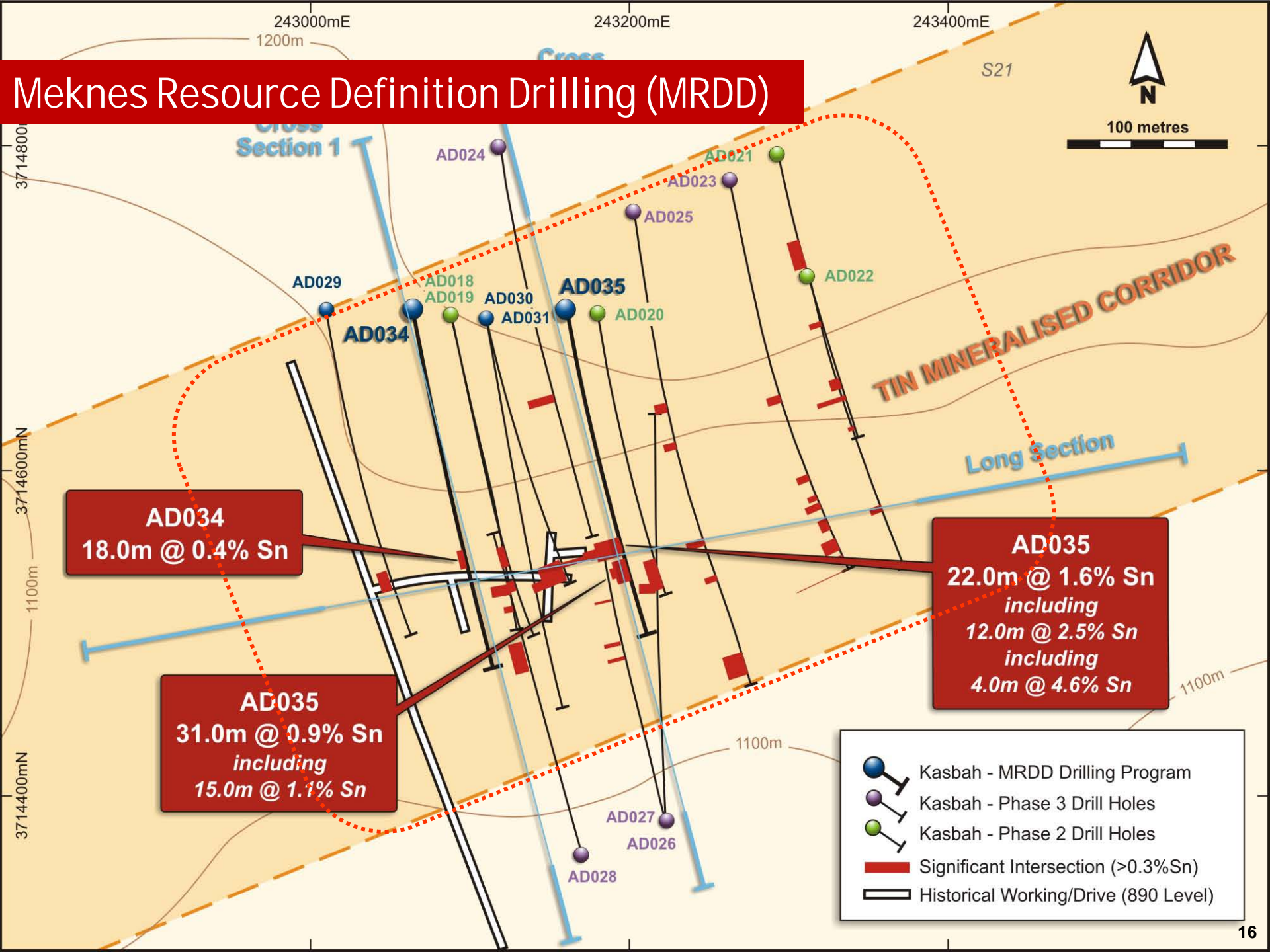


THE ACHMMACH TIN PROJECT





Meknes Resource Definition Drilling (MRDD)



243000mE

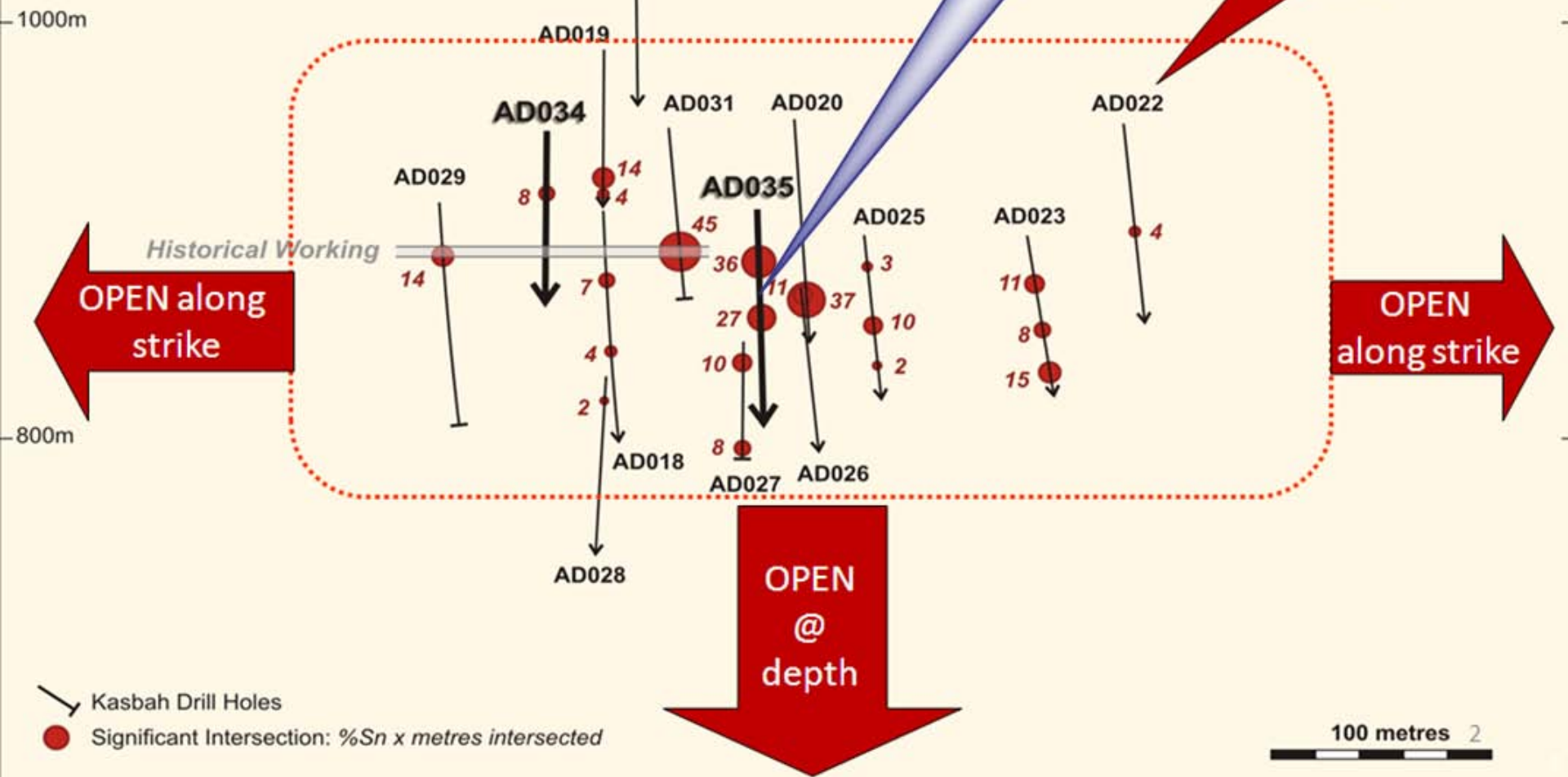
243200mE

243400mE

MEKNES ZONE LONG SECTION

AD035
57m @ 1.1% Sn

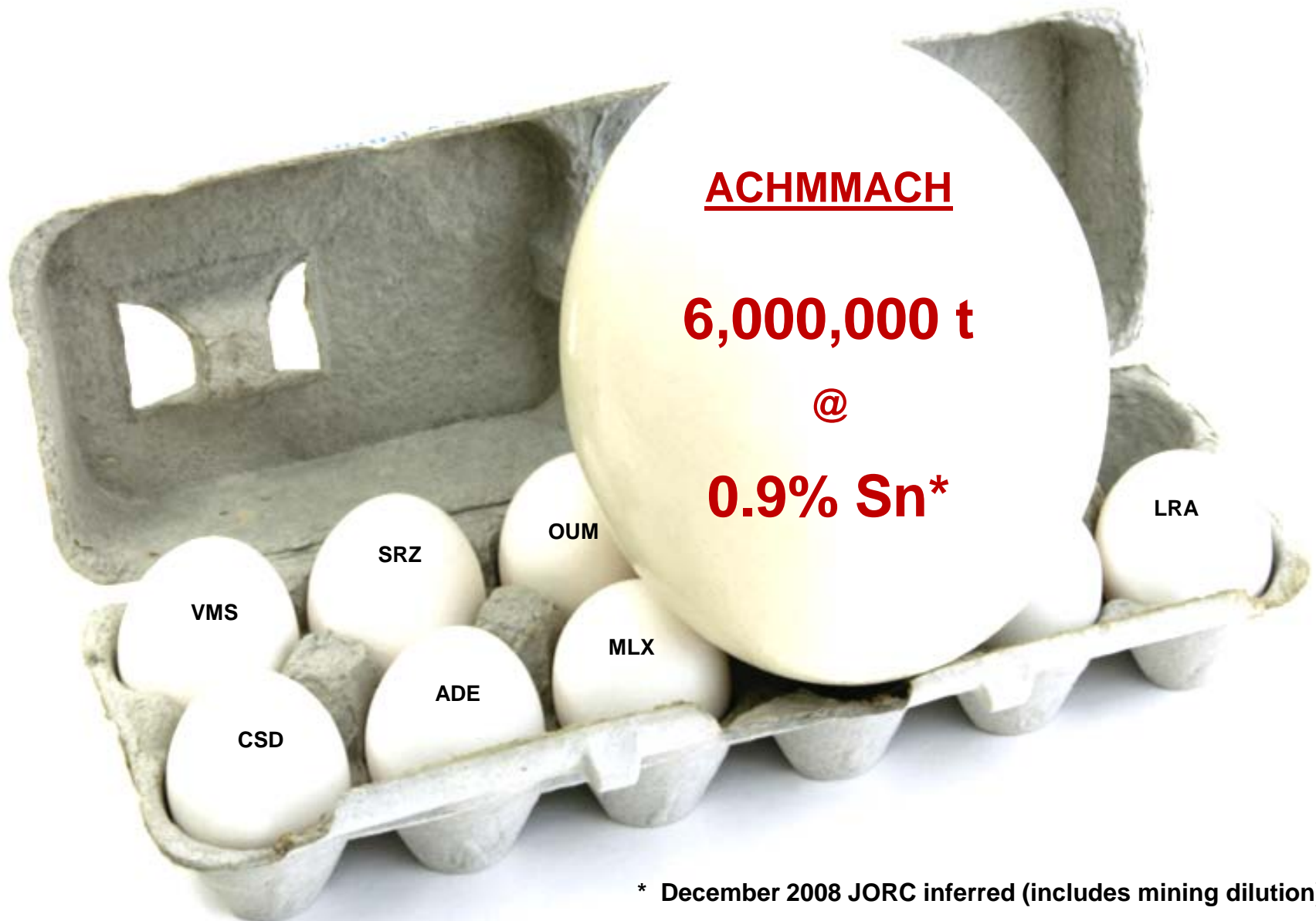
MRDD focuses on a 450m long x 150m vertical



MEKNES ZONE - Significant Drill Intercepts

Drill Hole	From (m)	To (m)	Intersection Width	Tin Grade
AD021	117.3	153.8	36.5m	0.83%
And	331.7	338.6	6.9m	1.85%
AD024	268.0	277.0	9.0m	1.67%
AD026	258.0	269.0	11.0m	1.04%
AD027	209.0	213.0	4.0m	1.12%
And	226.0	231.0	5.0m	1.06%
AD028	235.0	273.0	38.0m	0.93%
And	241.0	252.0	11.0m	2.02%
AD029	346.0	364.0	21.0m	0.68%
And	353.0	359.0	6.0m	1.02%
AD031	333.0	363.0	30.0m	1.50%
And	353.0	363.0	10.0m	2.00%
AD035	325.0	347.0	22.0m	1.64%
And	326.0	338.0	12.0m	2.50%

ACHMMACH - Grade & Resource Tonnage Still Growing



ACHMMACH

6,000,000 t

@

0.9% Sn*

LRA

OUM

SRZ

VMS

MLX

ADE

CSD

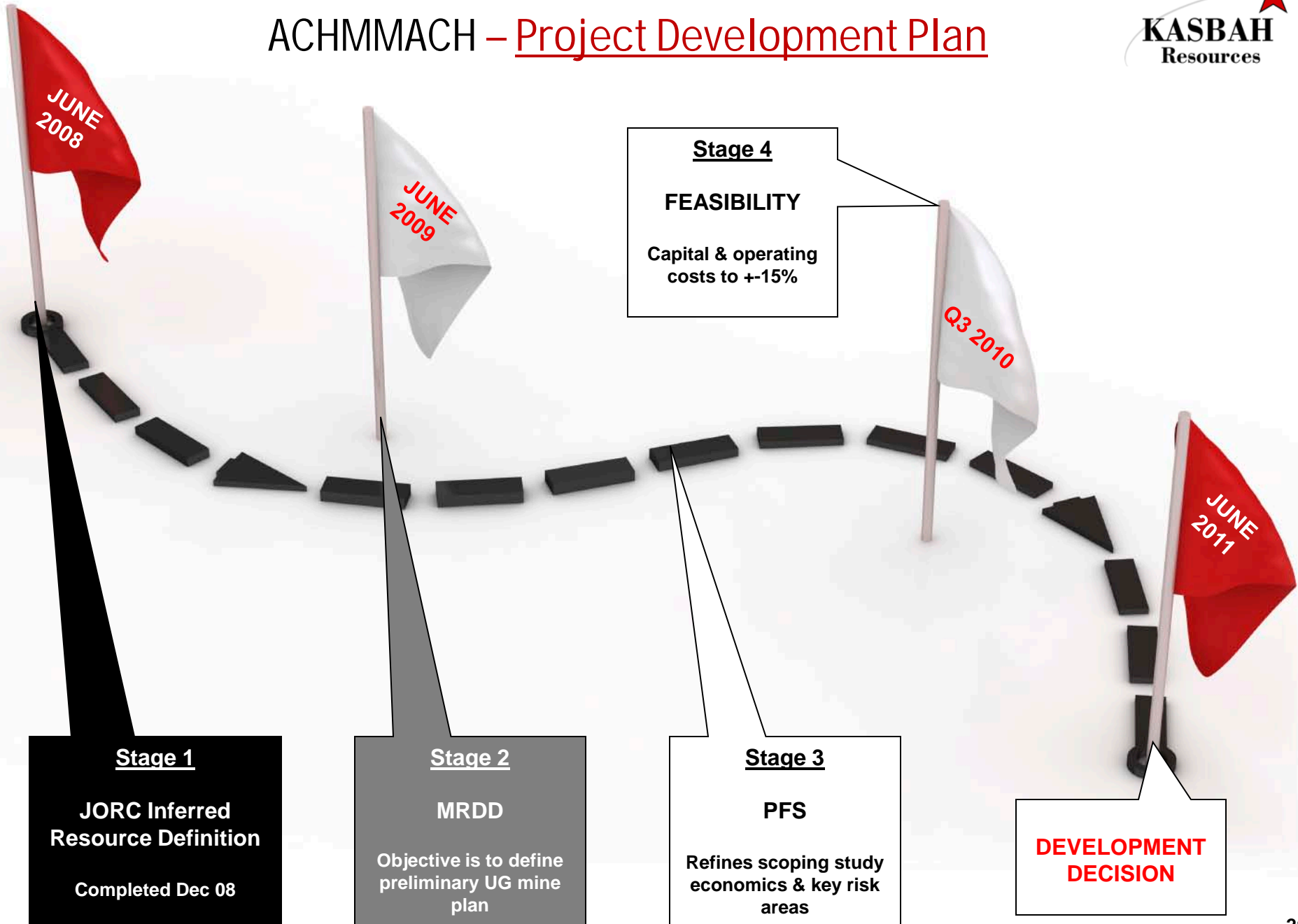
* December 2008 JORC inferred (includes mining dilution)

ACHMMACH – Mine Development Concept

- ❑ **Phase 1 Project Scale :** 800,000 tpa
- ❑ **Phase 1 Mine life:** 6 years
- ❑ **Mining method:** Bulk UG mining
- ❑ **Mined grade:** 0.9 – 1% diluted
- ❑ **Tin in tin concentrate:** 5,400 – 6,000 tpa
- ❑ **Concentrate grade:** > 55 % Sn
- ❑ **Processing:** Conventional gravity & flotation
- ❑ **Tin Recovery :** 75 - 80 % Sn
- ❑ **Opportunity:** Open pit targets



ACHMMACH – Project Development Plan





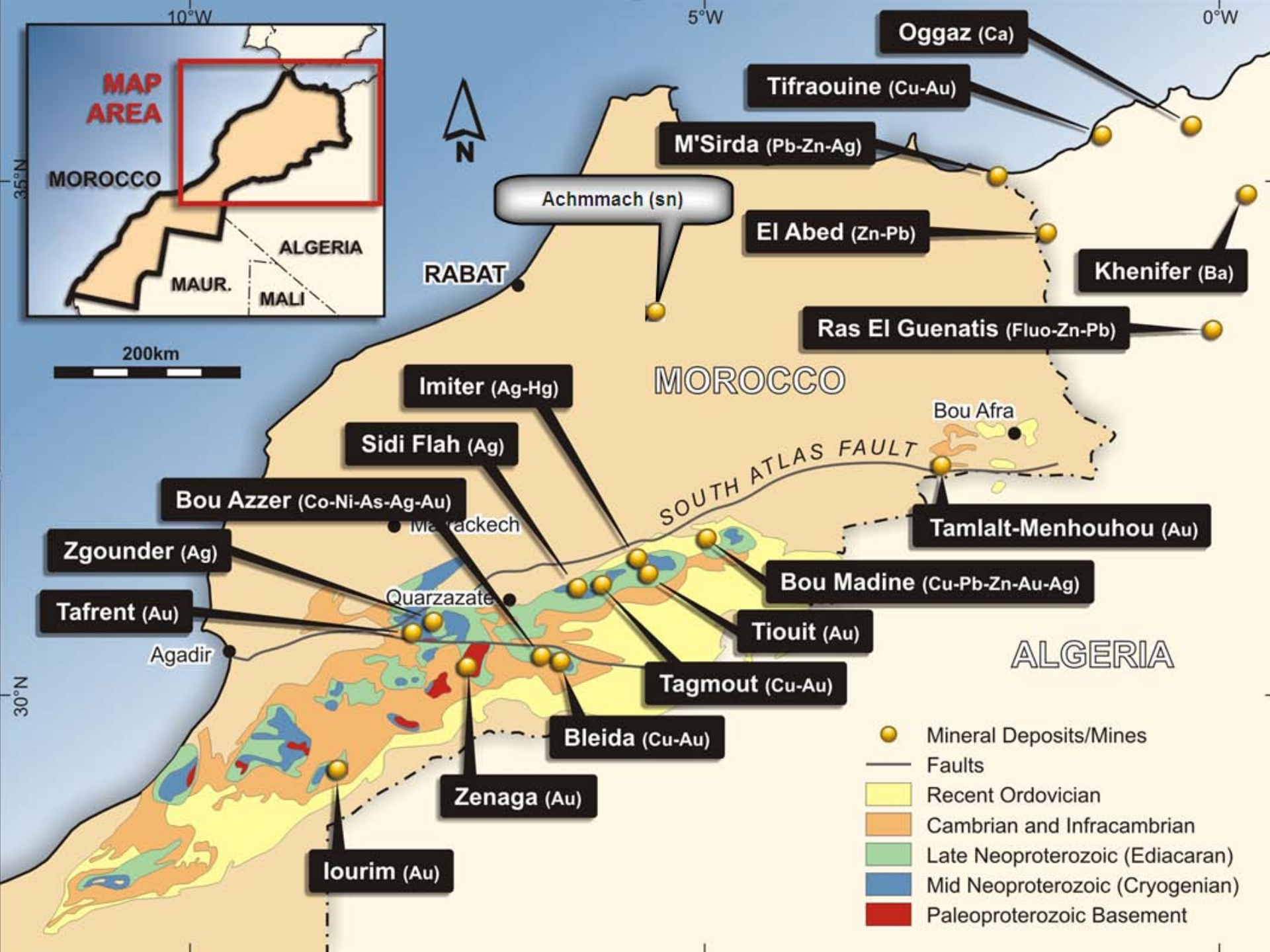
14 km FROM EUROPE...

MOROCCO – A pro-mining economy

Independence	From France 1956
Population	34.8m (2008)
GDP per capita (PPP)	US\$4000 (2008)
Government	Constitutional Monarchy
King	Mohammed VI - crowned 1999
Prime Minister	Abbas El Fassi - appointed Sept 2007
Free Trade Agreements	USA (2006) & EU(1996)
Major exports	Phosphates , agriculture & textiles
Clear Mining Code & Tenure	French Model – decreed 1951 & defines Exploration & Exploitation Permits
Mining culture	Base, Precious & Industrial metal mines
Investment Ready	No restrictive tax, ownership or profit repatriation laws



**KING MOHAMMED VI
addressing the UN**



10 Competitive Advantages - MOROCCO, ACHMMACH & KASBAH

ACHMMACH

- ❑ Experienced development team
- ❑ Clean cassiterite (SnO_2)
- ❑ High grade tin (0.9% Sn diluted)
- ❑ Granted Mining Permits
- ❑ JORC Resource & growing
- ❑ Project scale is meaningful
- ❑ Simple metallurgy
- ❑ 75-80% tin recovery
- ❑ Low operating cost
- ❑ Low investment & sovereign risk

COMPETITORS

- ❑ ?
- ❑ Polymetallics & tin equivalents ?
- ❑ Low grade (0.4% Sn non-diluted) (ITRI 09)
- ❑ Exploration licenses ?
- ❑ Few JORC / 43-101 classified resources
- ❑ Small scale = high risk
- ❑ Complex metallurgy = low recovery
- ❑ >30-40% recovery
- ❑ Complexity increases operating costs
- ❑ Investment & sovereign risk?

17 March 2010

INTERNATIONAL FINANCE CORP TO INVEST IN KASBAH

19 April 2010

TRAXYS TO INVEST IN KASBAH





Kasbah Resources Limited
The Achmmach Tin Project

www.kasbahresources.com

