

31 JANUARY 2011

ASX CODE: **KAS**

**BOARD & MANAGEMENT**

MIKE SPRATT  
NON EXECUTIVE CHAIRMAN

ROD MARSTON  
NON EXECUTIVE DIRECTOR

ROB WEINBERG  
NON EXECUTIVE DIRECTOR

WAYNE BRAMWELL  
MANAGING DIRECTOR

TREVOR HART  
CFO / COMPANY SECRETARY

CHRIS BOLGER  
COUNTRY MANAGER

JEFFREY LINDHORST  
EXPLORATION MANAGER

**PROJECTS**

ACHMMACH TIN PROJECT

TAMLALT GOLD PROJECT

**INVESTMENT DATA**

SHARES ON ISSUE 362M

**SHAREHOLDERS**

TOP 20 HOLD 56%

LME TIN PRICE  
(28/1/11)

US\$29,683 / T  
(CASH BUYER)

**ABOUT KASBAH**

KASBAH RESOURCES IS AN AUSTRALIAN LISTED MINERAL EXPLORATION AND DEVELOPMENT COMPANY ADVANCING THE ACHMMACH TIN PROJECT TOWARDS PRODUCTION.

OUR PRIME COMMODITY IS TIN.

## DECEMBER QUARTERLY REPORT

### HIGHLIGHTS

- Tin price hits **US\$29,683 / tonne** on increasing supply concerns
- Northern Zone first pass reconnaissance drilling of surface geochemical anomaly completed

Best down hole intercepts from the ENE trend includes:

**AD067** 12 m @ 1.06% Sn from 43m  
(Includes 3 m @ 3.80% Sn from 46m)

**AD069** 19 m @ 0.80% Sn from 4m  
(Includes 9 m @ 1.05% Sn from 4m)

**AD072** 21 m @ 0.99% Sn from 7m  
(Includes 8 m @ 2.06% Sn from 20m)

Best down hole intercepts from the NS trend includes:

**AD062** 14 m @ 0.79% Sn from 47m  
(Includes 10m @ 1.08% Sn from 47m)

- Meknes Zone – deeper infill and extensional drilling continues

Best down hole intercepts from Meknes includes:

**AD051** 9 m @ 1.71% Sn from 229m

**AD056** 6 m @ 1.64% Sn from 193m  
14 m @ 1.13% Sn from 259m

**AD063** 14 m @ 0.82% Sn from 250m  
(Includes 9m @ 1.00% Sn from 250m)

- 20,000m drilling contract awarded
- Mr Mike Spratt appointed as Non-Executive Chairman
- \$21M raised through share placement to new institutional investors
- \$9M raised through share purchase plan to existing investors

## DECEMBER QUARTERLY REPORT

### Overview

Kasbah Resources Limited (Kasbah) is pleased to provide this quarterly update on the company's progress.

In January and during the preceding quarter Kasbah;

- Completed first pass drilling of the shallow Northern Zone geochemical anomaly (18 holes for 1,981m)
- Continued extensional and infill diamond drilling of the deeper Meknes Zone
- Awarded a 20,000m diamond drilling contract to North Scandinavian Drilling
- Appointed Mr Mike Spratt as Non-Executive Chairman
- Raised \$21M through a two tranche share placement to new institutional investors
- Announced the global non-ferrous trading house Transamine had become a significant shareholder in Kasbah
- Raised \$9M in a heavily oversubscribed share purchase plan to existing investors.

Of critical interest to all is the current state of the world tin market.

On January 28 the spot tin price closed at US\$29,600 / tonne on the London Metal Exchange after breaching the US\$30,000 / tonne hurdle. This is another record for this valuable metal.

On January 29 Reuters reported Mr Nic Brown, head of commodities research, economics and strategy at Natexis as stating;

“Of all the base metals, tin has the best fundamentals. Supply appears relatively constrained...demand remains strong. You have a deficit in the market that is gradually eroding available stockpiles and there is limited capacity for substitution into other metals”.

The company's key activities are summarised below and significant drilling intercepts and drill hole status is attached as Appendices A and B.

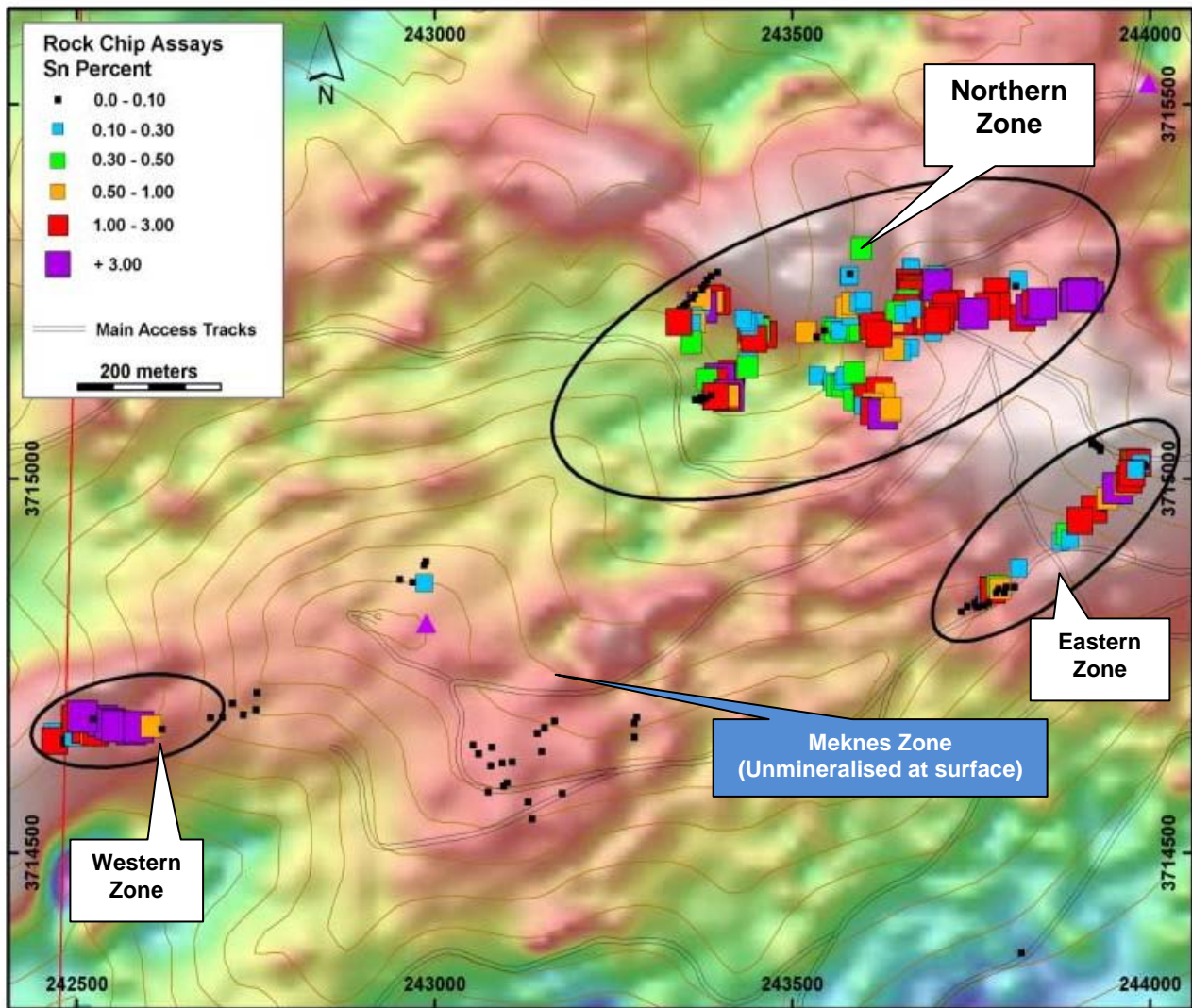


Figure 1

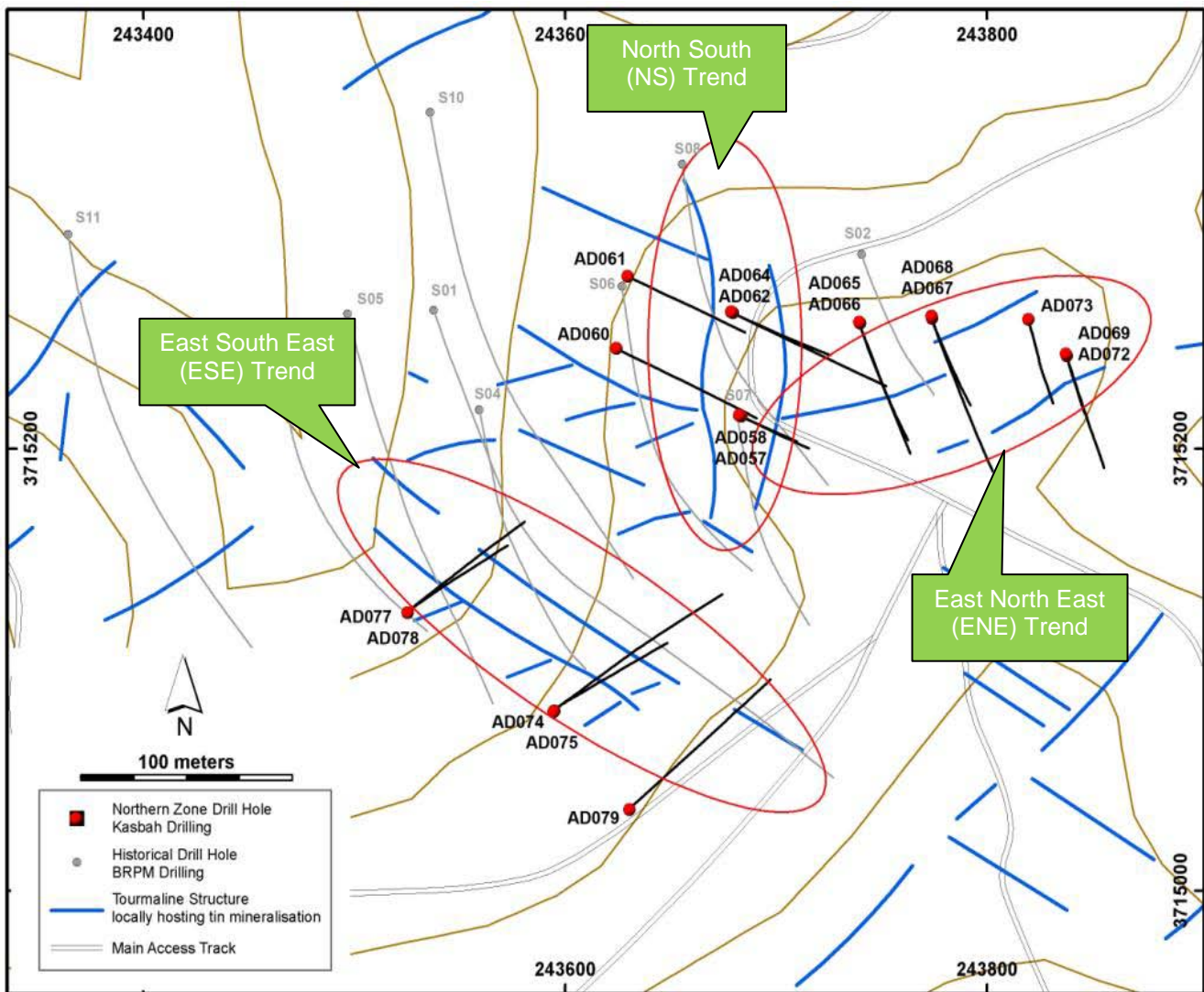
**Achmmach – Shallow and Deeper Tin Mineralised Targets**

**Shallow Targets Program – Northern Zone**

To date Kasbah has identified three surface geochemical anomalies supported by high grade tin outcrop across the Achmmach Tin Project (figure 1). The first shallow target to be drilled is the large Northern Zone surface geochemical anomaly and this drilling is now complete.

First pass drilling planned to test the open pit potential to 100m vertical depth below outcropping high grade tin mineralisation. Kasbah has completed 18 angled diamond drill holes for 1,981 metres and has tested three mineralised trends (figure 2) including the East North East trend (ENE), the North South trend (NS) and the East South East trend (ESE).

The drilling has been designed to intersect the mineralised zones at high angles.



**Figure 2**  
**Northern Zone –Tin Mineralised Trends and Drill Hole Collar Locations.**

The drilling has generated encouraging results with several tin intercepts recording strong tin grades. (For comparison, based upon current commodity prices a 1% tin result equates to approximately 6.4 g/t Au.)

The best down hole intercepts from the ENE trend include:

- **AD066** 5 m @ 1.08% Sn from 31m  
 7 m @ 0.41% Sn from 41m (including 2 m @ 1.10% Sn from 41m)
- **AD067** 12 m @ 1.06% Sn from 43m (including 3 m @ 3.80% Sn from 46m )
- **AD068** 7 m @ 0.61% Sn from 23m (including 0.7 m @ 3.25% Sn from 28m)
- **AD069** 19 m @ 0.80% Sn from 4m (including 9 m @ 1.05% Sn from 4m)
- **AD072** 21 m @ 0.99% Sn from 7m (including 8 m @ 2.06% Sn from 20m)

The best intercepts from the NS trend include:

- **AD058** 4 m @ 0.50% Sn from 66m (including 1 m @ 1.09% Sn from 68m)
- **AD061** 6 m @ 0.42% Sn from 50m
- **AD062** 14 m @ 0.79% Sn from 47m (including 10m @ 1.08% Sn from 47m)

Assay results are pending for the ESE trend. Once interpretation of all results is complete, a follow up drilling program will be planned to determine the extent and controls on the shallow tin mineralisation. Drilling has also been planned for the Western Zone and Eastern Zone geochemical anomalies.

### Meknes Extensional and Infill Drilling

The objectives of this drilling are to infill the defined tin resources within the Meknes Zone and extend the known resource to the west (figure 3). The holes completed were drilled from the south side of Sidi Addi (the highest point at Achmmach) towards the north and into the Meknes Zone.

Drill holes AD051 and AD071 are on cross section AD034 and drill hole AD063 is on cross section AD030.

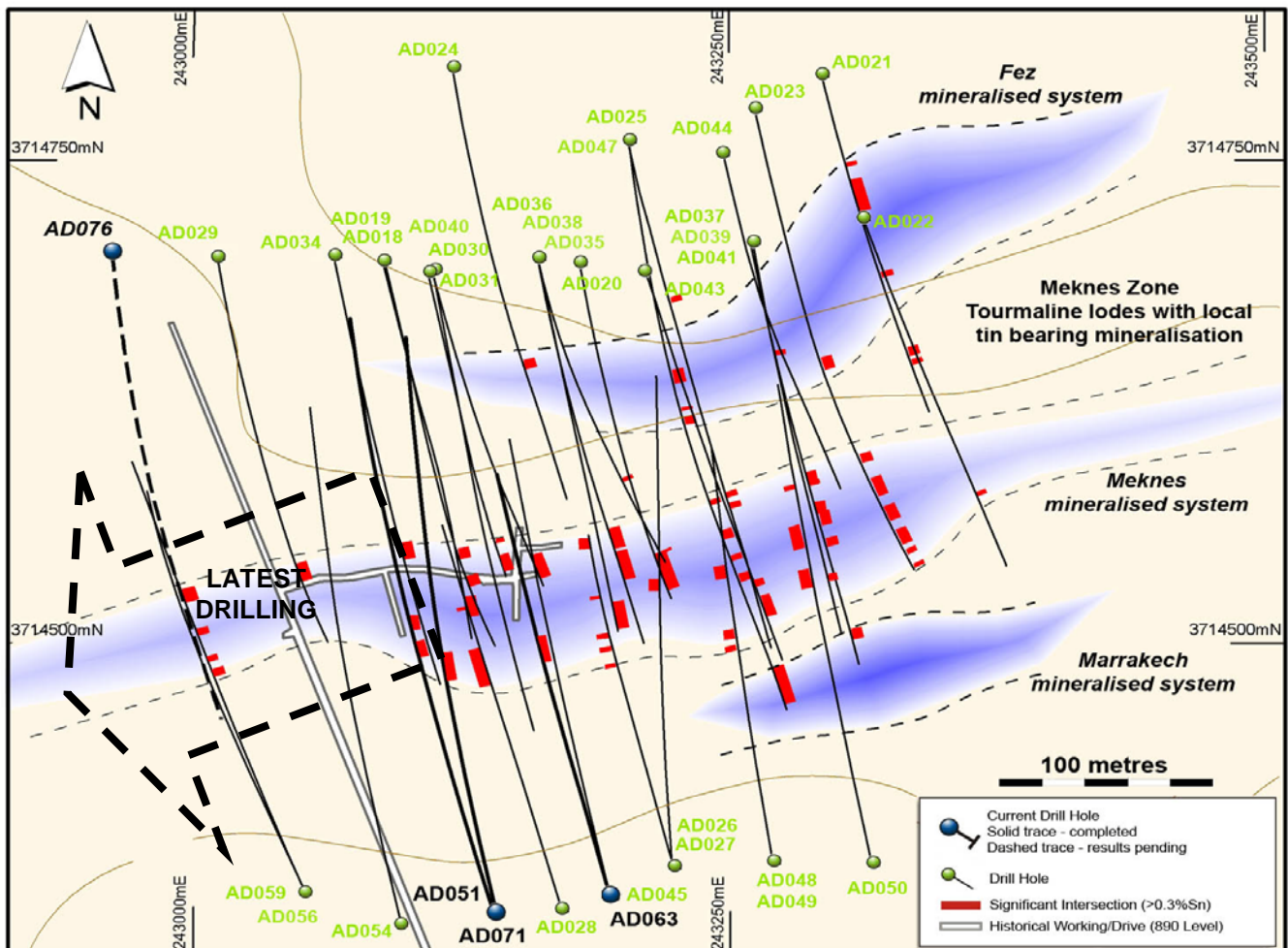


Figure 3

AD051, AD063 and AD071 drill hole traces - Plan view

(Significant tin grade intersections marked in red)

- **AD051** results include:
  - 9 m @ 1.71% Sn from 229 m
  - 11 m @ 0.79% Sn from 245 m
- **AD056** results include:
  - 6 m @ 1.64% Sn from 193 m
  - 14 m @ 1.13% Sn from 259 m
- **AD063** results include:
  - 14 m @ 0.82% Sn from 250 m
  - Including 9 m @ 1.00% Sn from 250 m
- **AD071** results include:
  - 23 m @ 0.49 % Sn from 245 m
  - Including 10 m @ 0.79% Sn from 255 m

Mineralisation along the footwall of the Meknes Zone is now showing good continuity with drill holes AD027, AD063, AD028 and AD071 intersecting mineralisation at similar levels within the Meknes Zone over a strike length of approximately 100 metres (drill hole AD051 is drilled up dip of these four holes).

Drill hole AD051 has intersected a new zone of mineralisation at low grade (39 m @ 0.33% Sn from 417 m). The relationship between this new low grade zone with other zones of tin mineralisation has yet to be determined but indicates potential for additional tin mineralisation in these untested positions over most of the Meknes Resource strike length. The potential for new mineralised structures lying to the north of the Meknes Resource, as suggested by the AD051 low grade intersection, is untested by previous drilling.

A summary of all significant intersections and drill hole status is attached as **Appendices A and B**.

### **New Drilling Contract Awarded**

As part of the company's plans to accelerate drilling at Achmmach, Kasbah awarded a first stage 20,000m contract to North Scandinavian Drilling (NSD). NSD have initially mobilised 2 diamond drill rigs to Morocco in December 2010 and commenced drilling at Achmmach on January 2.

A third diamond rig is currently being mobilised and is expected to be operational in February.

### **Completion of Two Tranche Placement to Raise \$21 million**

On 18 October 2010, Kasbah announced it would raise up to \$24 million through a two tranche share placement to new institutional investors (\$21 million) and share purchase plan (SPP) to existing investors (\$3 million) to fund an accelerated exploration and development program at its Achmmach Tin Project.

Kasbah announced on November 4 that Tranche 1 of the share placement had been completed and that the Company had allotted 35 million shares at \$0.24 cents to raise \$8.4 million. Tranche 2 of the share placement (a further 52.5 million shares to raise \$12.6 million) was completed after shareholders' approval was achieved at the Annual General Meeting, held on Friday 26 November 2010.

A total of \$21 million was raised from Australian, Asian and European institutional investors.

### Global Non-Ferrous Trading House Becomes Significant Shareholder in Kasbah

In November Kasbah announced that Transamine, a global non-ferrous trading house and one of the oldest, independent, privately held commodities trading companies in the world specialising in raw materials had become a significant shareholder in the company.

Transamine provides services in marketing, raw material sourcing, finance and investment worldwide, with a core business focus on non-ferrous metals.

### Share Purchase Plan (SPP) Heavily Oversubscribed

On announcement of the proposed capital raising, Kasbah had indicated its intention to raise \$3 million by means of the SPP and \$21 million by means of share placement. The SPP closed heavily oversubscribed, with the Company receiving more than 1300 applications from existing shareholders to a total value of \$15.6 million.

Given the significant demand from shareholders, the Directors resolved to increase the SPP to \$9 million. The very successful SPP was completed on December 3.

### Mr Mike Spratt appointed Non- Executive Chairman

During the quarter Kasbah announced the appointment of Mr Michael Spratt to the position of non-executive Chairman, effective 1<sup>st</sup> December 2010. Mr. Spratt has been a non-executive director of Kasbah since his appointment in August 2010.

Mr Spratt is a tin specialist and has over 40 years of engineering, development and operations experience in the mining and smelting industries. Prior to joining the Board of Kasbah he was Managing Director of the Thailand Smelting and Refining Company (the world's 5th largest tin smelter) for 7 years. Prior to this role he was General Manager Operations of the Renison Bell Tin Mine in Tasmania for Murchison United NL.

Mr Spratt has managed the process of feasibility through to operations in several commodities and his expertise as a senior executive at Simcoa Operations Pty Ltd, Kaiser Engineers Limited and Minproc Limited will be invaluable as Kasbah transitions the Achmmach Tin Project towards production.

Mr Spratt's appointment followed the resignation of Mr Graeme Walker as Chairman and director of the Company. The Company sincerely thanks Mr Walker for his stewardship and his significant and valuable contribution to the Company since its inception.

For and on behalf of the Board,

A handwritten signature in blue ink, appearing to read "Wayne Bramwell", is written over a light blue horizontal line.

**Wayne Bramwell**  
Managing Director

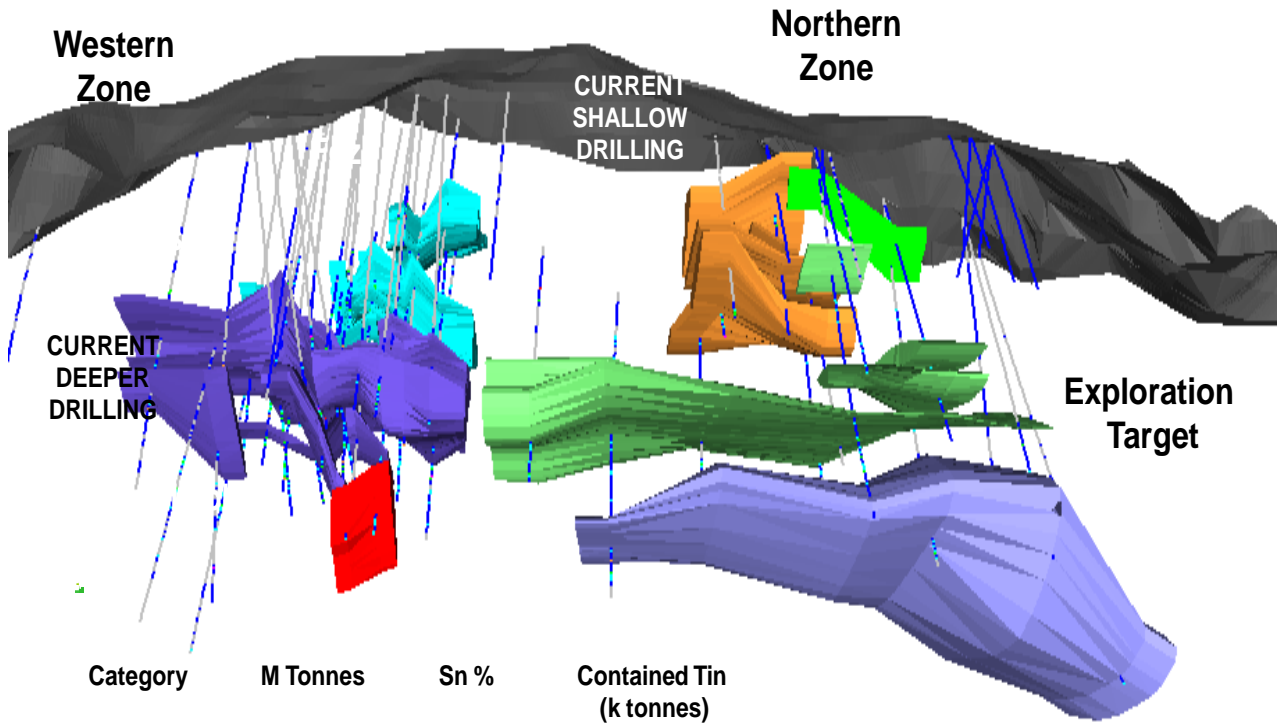
For further information please go to:

[www.kasbahresources.com](http://www.kasbahresources.com)

Or email:

[info@kasbahresources.com](mailto:info@kasbahresources.com)

# Achmmach – Surface & Deeper Tin Targets



Category	M Tonnes	Sn %	Contained Tin (k tonnes)
Indicated	2.2	0.8	17
Inferred	4.8	0.8	37
<b>Total</b>	<b>7.0</b>	<b>0.8</b>	<b>54</b>

**Exploration Target**

The information in this announcement that relates to Kasbah Resources Limited's mineral resource estimates for the Achmmach Project is based on information compiled by Michael Job, who is a full time employee of Quantitative Group and a Member of the Australasian Institute of Mining and Metallurgy. Michael Job has sufficient experience which is relevant to the style of mineralisation and type of deposit under consideration and to the activity which he is undertaking to qualify as a 'Competent Person' as defined in the 2004 JORC code. Michael Job consents to the inclusion in the announcement of the matters based on this information in the form and context in which it appears.

The information in this report is based on information compiled by Mr. Chris Bolger a Member of the Australasian Institute of Mining and Metallurgy. Mr. Bolger is a full-time employee of Kasbah Resources Limited and has sufficient experience which is relevant to the style of mineralisation and type of deposit under consideration and to the activity which he is undertaking to qualify as a Competent Person as defined in the 2004 Edition of the 'Australasian Code for Reporting of Exploration Results, Mineral Resources and Ore Reserves'. Mr. Bolger consents to the inclusion in the report of the matters based on this information in the form and context in which it appears.

APPENDIX A:

**Table 1: Meknes Zone Drill Holes Significant Intersections**

Hole ID	Collar WGS84 N	Collar WGS84 E	From (m)	To (m)	Down-hole interval (m)	Tin %
<b>AD051</b>	3714359	243139	229	238	<b>9</b>	<b>1.71</b>
			245	256	11	0.79
<b>AD056</b>	3714701	243010	193	199	<b>6</b>	<b>1.64</b>
			204	210	6	0.60
			227	234	7	0.62
			259	273	<b>14</b>	<b>1.13</b>
		includes	260	263	<b>3</b>	<b>2.81</b>
<b>AD063</b>	3714373	243193	250	264	14	0.82
			includes	250	259	<b>9</b>
<b>AD071</b>	3714361	243140	245	268	23	0.49
			includes	255	265	10

**Table 2: Northern Zone Geochemical Anomaly Drill holes Significant Intersections**

Hole ID	Collar WGS84 N	Collar WGS84 E	From (m)	To (m)	Down-hole interval (m)	Tin %	
<b>AD065</b>	3715256	243739	48	55	7	0.45	
			82	86	4	0.65	
<b>AD066</b>	3715257	243739	31	36	<b>5</b>	<b>1.08</b>	
			41	48	7	0.41	
			includes	41	43	<b>2</b>	<b>1.10</b>
			89	93	5	0.23	
<b>AD067</b>	3715259	243773	28	36	8	0.29	
			43	55	<b>12</b>	<b>1.06</b>	
			includes	46	49	<b>3</b>	<b>3.80</b>
<b>AD068</b>	3715260	243773	23	30	7	0.61	
			includes	28	28.73	<b>0.73</b>	<b>3.25</b>
<b>AD069</b>	3715242	243837	4	23	19	0.80	
			includes	4	13	<b>9</b>	<b>1.05</b>

<b>AD072</b>	3715243	243837	7	28	<b>21</b>	<b>0.99</b>
		includes	20	28	<b>8</b>	<b>2.06</b>
<b>AD057</b>	3715214	243683	37.3	42.5	7.2	0.32
<b>AD058</b>	3715215	243682	66	70	4	0.50
		includes	68	69	<b>1</b>	<b>1.09</b>
<b>AD061</b>	3715278	243629	50	56	6	0.42
<b>AD062</b>	3715261	243679	47	61	14	0.79
		includes	47	57	<b>10</b>	<b>1.08</b>
			73	80	7	0.34
			102	110	8	0.28

Note:

Significant intersections <100m below natural surface selection are defined as:

≥ 0.2% Sn and ≥ 5m down-hole and ≤ 3m down-hole < 0.2% Sn included

Or

≥ 0.2% Sn and ≥ 1.0 % Tin-metres metal accumulation down-hole and ≤ 3m down-hole < 0.2% Sn included

APPENDIX B:

**Table 3: Meknes Drill hole Status January 28 2011**

Hole ID	Collar WGS84 N	Collar WGS84 E	Collar dip / azimuth	Depth (m)	Target	Status
AD076	3714703	242961	-55/170	563.7	Meknes	Samples at laboratory
AD082	3714703	242961	-64/170	156.8	Meknes	Stopped, awaiting re-entry
AD084	3714703	242961	-50/168	85.6	Meknes	Stopped, awaiting re-entry
AD087	3714755	243246	-50/105	221.7	Fez	drilling
AD088	3714633	242874	-65/160	109.1	Meknes	drilling

**Table 4: Shallow Targets Drill hole Status January 28 2011**

Hole ID	Collar WGS84 N	Collar WGS84 E	Collar dip / azimuth	Depth (m)	Target	Status
AD077	3715126	243525	-48/048	106.0	North Zone	Interpretation in progress
AD078	3715126	243525	-64/049	127.5	North Zone	Interpretation in progress
AD079	3715037	243630	-50/048	139.5	North Zone	Interpretation in progress
AD081	3715043	243634	-65/048	61.1	North Zone	For dispatch to laboratory
AD083	3715159	243405	-50/158	98.4	North Zone	For dispatch to laboratory
AD085	3715161	243404	-50/179	12.55	North Zone	For dispatch to laboratory

# Appendix 5B

## Mining exploration entity quarterly report

Introduced 01/07/96 Origin Appendix 8 Amended 01/07/97, 01/07/98, 30/09/01, 01/06/10, 17/12/10

Name of entity

<b>KASBAH RESOURCES LIMITED</b>
---------------------------------

ABN

78 116 931 705
----------------

Quarter ended ("current quarter")

DECEMBER 2010
---------------

### Consolidated statement of cash flows

	Current quarter \$A'000	Year to date (6 months) \$A'000
<b>Cash flows related to operating activities</b>		
1.1 Receipts from product sales and related debtors	-	-
1.2 Payments for		
(a) exploration & evaluation	(1,561)	(3,420)
(b) development	-	-
(c) production	-	-
(d) administration	(550)	(951)
1.3 Dividends received	-	-
1.4 Interest and other items of a similar nature received	119	145
1.5 Interest and other costs of finance paid	-	-
1.6 Income taxes paid	-	-
1.7 Other (provide details if material)	-	-
<b>Net Operating Cash Flows</b>	<b>(1992)</b>	<b>(4,226)</b>
<b>Cash flows related to investing activities</b>		
1.8 Payment for purchases of:		
(a) prospects	-	-
(b) equity investments	-	-
(c) other fixed assets	(52)	(69)
1.9 Proceeds from sale of:		
(a) prospects	-	-
(b) equity investments	-	-
(c) other fixed assets	-	-
1.10 Loans to other entities	-	-
1.11 Loans repaid by other entities	-	-
1.12 Other (provide details if material)	-	-
<b>Net investing cash flows</b>	<b>(52)</b>	<b>(69)</b>
1.13 Total operating and investing cash flows (carried forward)	<b>(2,044)</b>	<b>(4,295)</b>

+ See chapter 19 for defined terms.

**Appendix 5B**  
**Mining exploration entity quarterly report**

1.13	Total operating and investing cash flows (brought forward)	(2,044)	(4,295)
	<b>Cash flows related to financing activities</b>		
1.14	Proceeds from issues of shares, options, etc.	29,999	29,999
1.15	Proceeds from sale of forfeited shares	-	-
1.16	Proceeds from borrowings	-	-
1.17	Repayment of borrowings	-	-
1.18	Dividends paid	-	-
1.19	Other – Share issue costs	-	-
	<b>Net financing cash flows</b>	<b>29,999</b>	<b>29,999</b>
	<b>Net increase (decrease) in cash held</b>	<b>27,955</b>	<b>25,704</b>
1.20	Cash at beginning of quarter/year to date	1,485	3,738
1.21	Exchange rate adjustments to item 1.20	(8)	(10)
1.22	<b>Cash at end of quarter</b>	<b>29,432</b>	<b>29,432</b>

**Payments to directors of the entity and associates of the directors**

**Payments to related entities of the entity and associates of the related entities**

		Current quarter \$A'000
1.23	Aggregate amount of payments to the parties included in item 1.2	206
1.24	Aggregate amount of loans to the parties included in item 1.10	-

1.25 Explanation necessary for an understanding of the transactions

Director's fees paid to Directors for the quarter ending 31 December 2010.

**Non-cash financing and investing activities**

2.1 Details of financing and investing transactions which have had a material effect on consolidated assets and liabilities but did not involve cash flows

Nil

2.2 Details of outlays made by other entities to establish or increase their share in projects in which the reporting entity has an interest

Nil

+ See chapter 19 for defined terms.

**Financing facilities available**

*Add notes as necessary for an understanding of the position.*

	Amount available \$A'000	Amount used \$A'000
3.1 Loan facilities	Nil	Nil
3.2 Credit standby arrangements	Nil	Nil

**Estimated cash outflows for next quarter**

	\$A'000
4.1 Exploration and evaluation	2,000
4.2 Development	-
4.3 Production	-
4.4 Administration	450
<b>Total</b>	<b>2,450</b>

**Reconciliation of cash**

Reconciliation of cash at the end of the quarter (as shown in the consolidated statement of cash flows) to the related items in the accounts is as follows.

	Current quarter \$A'000	Previous quarter \$A'000
5.1 Cash on hand and at bank	782	1,074
5.2 Deposits at call	28,473	210
5.3 Bank overdraft	-	-
5.4 Other (provide details) - Cash held in Morocco	177	201
<b>Total: cash at end of quarter</b> (item 1.22)	<b>29,432</b>	<b>1,485</b>

**Changes in interests in mining tenements**

	Tenement reference	Nature of interest (note (2))	Interest at beginning of quarter	Interest at end of quarter
6.1	Interests in mining tenements relinquished, reduced or lapsed	None.		
6.2	Interests in mining tenements acquired or increased	None.		

+ See chapter 19 for defined terms.

**Appendix 5B**  
**Mining exploration entity quarterly report**

**Issued and quoted securities at end of current quarter**

*Description includes rate of interest and any redemption or conversion rights together with prices and dates.*

	Total number	Number quoted	Issue price per security (see note 3) (cents)	Amount paid up per security (see note 3) (cents)
7.1 <b>Preference +securities</b> <i>(description)</i>				
7.2 Changes during quarter (a) Increases through issues (b) Decreases through returns of capital, buy-backs, redemptions				
7.3 <b>+Ordinary securities</b>	362,312,596	362,312,596		
7.4 Changes during quarter (a) Increases through issues (b) Decreases through returns of capital, buy-backs	124,997,590	124,997,590	24 cents	24 cents
7.5 <b>+Convertible debt securities</b> <i>(description)</i>				
7.6 Changes during quarter (a) Increases through issues (b) Decreases through securities matured, converted				
7.7 <b>Options</b> <i>(description and conversion factor)</i>			<i>Exercise price</i>	<i>Expiry Date</i>
KASAF	9,000,000	-	\$0.25	15 November 2011
KASAAB	5,625,000	-	\$0.25	15 November 2011
KASAAC	1,450,000	-	\$0.20	10 May 2011
KASAK	1,000,000	-	\$0.35	1 May 2013
KASAM	1,000,000	-	\$0.25	12 July 2013
KASAI	1,125,000	-	\$0.25	15 November 2011
KASAO	1,500,000	-	\$0.10	5 January 2015
KASAQ	1,500,000	-	\$0.10	20 April 2015
KASAS	6,650,000	-	\$0.25	19 April 2002
KASAU	7,250,000	-	\$0.25	8 June 2012
KASAY	16,250,000	-	\$0.25	15 June 2012

+ See chapter 19 for defined terms.

**Appendix 5B**  
**Mining exploration entity quarterly report**

---

7.8	Issued during quarter				
7.9	Exercised during quarter				
7.10	Expired during quarter				
7.11	<b>Debentures</b> <i>(totals only)</i>				
7.12	<b>Unsecured notes</b> <i>(totals only)</i>				

---

+ See chapter 19 for defined terms.

## Compliance statement

- 1 This statement has been prepared under accounting policies which comply with accounting standards as defined in the Corporations Act or other standards acceptable to ASX (see note 5).
- 2 This statement does ~~not~~ *(delete one)* give a true and fair view of the matters disclosed.



Date: 31st January 2011  
Chief Financial Officer & Company Secretary

Print name: Trevor G Hart

## Notes

- 1 The quarterly report provides a basis for informing the market how the entity's activities have been financed for the past quarter and the effect on its cash position. An entity wanting to disclose additional information is encouraged to do so, in a note or notes attached to this report.
- 2 The "Nature of interest" (items 6.1 and 6.2) includes options in respect of interests in mining tenements acquired, exercised or lapsed during the reporting period. If the entity is involved in a joint venture agreement and there are conditions precedent which will change its percentage interest in a mining tenement, it should disclose the change of percentage interest and conditions precedent in the list required for items 6.1 and 6.2.
- 3 **Issued and quoted securities** The issue price and amount paid up is not required in items 7.1 and 7.3 for fully paid securities.
- 4 The definitions in, and provisions of, *AASB 6: Exploration for and Evaluation of Mineral Resources* and *AASB 107: Statement of Cash Flows* apply to this report.
- 5 **Accounting Standards** ASX will accept, for example, the use of International Financial Reporting Standards for foreign entities. If the standards used do not address a topic, the Australian standard on that topic (if any) must be complied with.

== == == == ==