

19 SEPTEMBER 2011

ASX Code: KAS

MIKE SPRATT
NON-EXECUTIVE CHAIRMAN

WAYNE BRAMWELL
MANAGING DIRECTOR

ROD MARSTON
NON-EXECUTIVE DIRECTOR

ROB WEINBERG
NON-EXECUTIVE DIRECTOR

GARY DAVISON
NON-EXECUTIVE DIRECTOR

IAN McCUBBING
NON-EXECUTIVE DIRECTOR

TREVOR O'CONNOR
CFO / COMPANY SECRETARY

ADRIAN DI CARLO
JOINT COMPANY SECRETARY

LME TIN PRICE (16/09/11)

US\$23,450/T
(CASH BUYER)

PROJECTS

ACHMMACH TIN PROJECT
TAMLALT GOLD PROJECT

INVESTMENT DATA

SHARES ON ISSUE 364M

ABOUT KASBAH

KASBAH RESOURCES IS AN AUSTRALIAN LISTED MINERAL EXPLORATION AND DEVELOPMENT COMPANY ADVANCING THE ACHMMACH TIN PROJECT TOWARDS PRODUCTION.

OUR PRIME COMMODITY IS TIN.

ACHMMACH DRILLING UPDATE



HIGHLIGHTS

- Gap Zone extensional drilling continues
- 2 new drill sections outside the current resource model are being tested
- Potential for additional growth in resource tonnage demonstrated as AD105 and AD106 have extended the strike continuity of the Meknes trend mineralisation into the Gap Zone by at least 200m

AD105 returned:

- 20m @ 0.71% Sn from 232m
(Includes 8m @ 1.13% Sn from 241m)
- 25m @ 0.66% Sn from 263m
(Includes 5m @ 1.48% Sn from 265m)
- 13m @ 0.63% Sn from 445m
(Includes 5m @ 1.07% Sn from 448m)

AD106 returned:

- 11m @ 0.99% Sn from 300m
(Includes 3m @ 2.37%Sn from 305m)
- 4m @ 2.37% Sn from 417m

- Two diamond drill rigs currently operational at Achmmach
- Three additional diamond drill rigs in transit to Morocco

ACHMMACH DRILLING UPDATE

OVERVIEW

Kasbah Resources Limited (“Kasbah”) is pleased to announce the latest exploration drilling results from the Company’s Achmmach Tin Project in Morocco.

AD105 and AD106 are testing the sparsely drilled Gap Zone exploration target (**refer figure 1**). Both holes are outside the current resource model and are located 160m and 240m respectively to the east of the last drill section in the 2010 Meknes resource (**refer figure 2**).

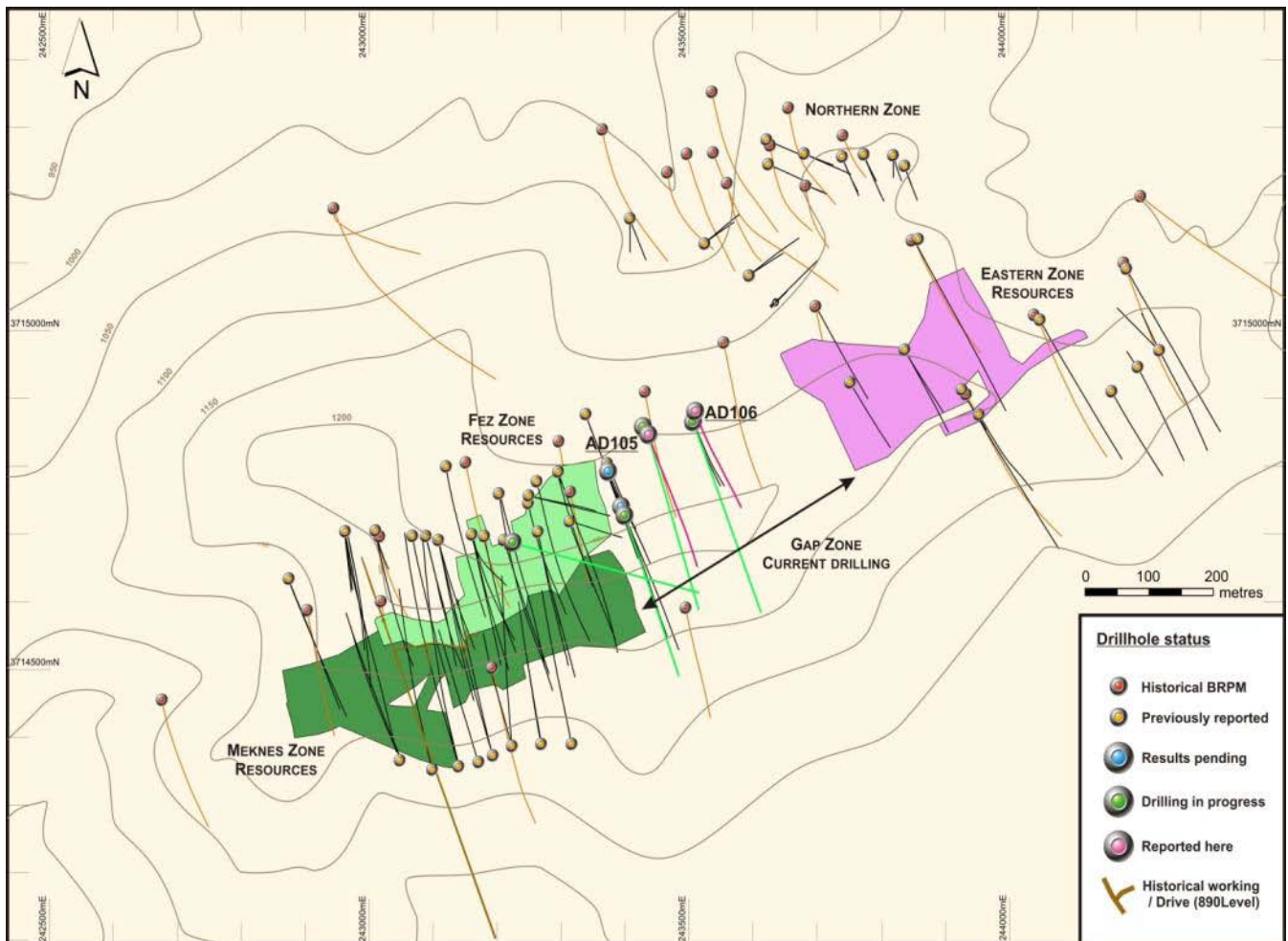


Figure 1

Achmmach Drill Plan (plan view of drill hole traces and currently defined resource blocks)

These latest drill holes (on sections 2530m E and 2610m E) test the down dip portion of Meknes at a similar level to AD095D1 (the first Gap section 2450mE). The AD105 and AD106 assay results are typical of drill hole results previously reported from the Meknes Trend (**refer figure 2**) and confirm the predicted locations of the mineralised zones within the Gap Zone.

These holes extend the strike length of the mineralisation by another 200 metres beyond the resource boundary.

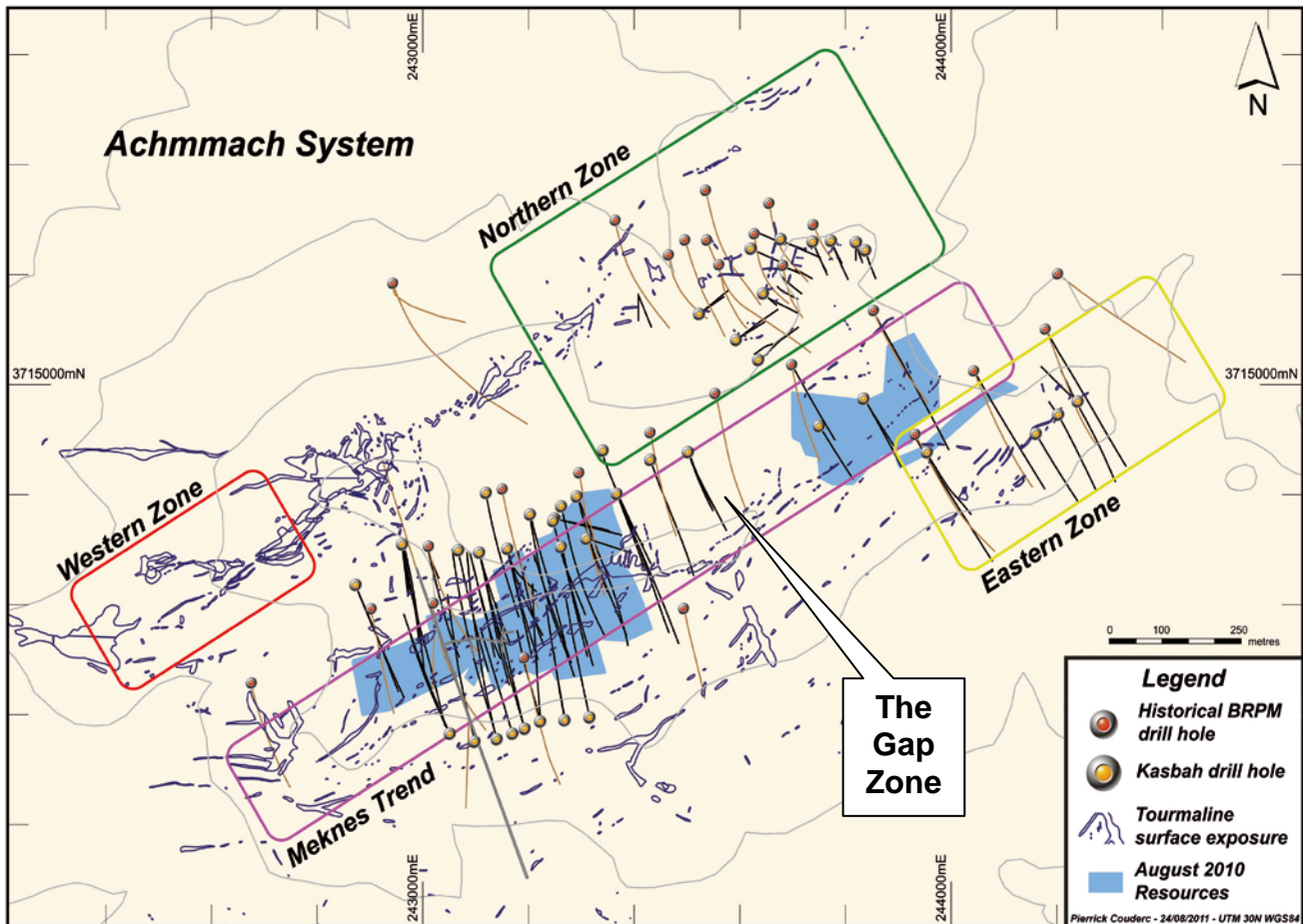


Figure 2

Plan View of Major Mineralising Trends at Achmmach (August 2010 resource blocks shown)

KEY POINTS

- The eastern most section of the 2010 Meknes resource is defined by cross section 2450mE. Drill hole AD105 is located 160 metres east of this section into the Gap Zone (on cross section 2530mE – Figure 3) and drill hole AD106 is located another 80 metres to the east (on cross section 2610mE - Figure 4).
- These latest holes indicate that the tin mineralisation within the existing Meknes trend resource extends 200 metres beyond the eastern boundary of the 2010 Meknes Zone resource into the Gap Zone.

AD105 returned:

- 7m @ 0.98% Sn from 209m, includes 3m @ 1.79% Sn from 213m (Fez?)
- 20m @ 0.71% Sn from 232m, including 8m @ 1.13% Sn from 241m (Fez?)
- 25m @ 0.66% Sn from 263m, including 5m @ 1.48% Sn from 265m (Fez?)
- 18m @ 0.48% Sn from 308m, including 4m @ 0.98% Sn from 316m (Meknes)
- 13m @ 0.63% Sn from 445m, including 5m @ 1.07% Sn from 448m.

AD105 also confirms the Meknes intersection in the BRPM drill hole S21 which is nearby.

AD106 returned:

- 6m @ 0.72% Sn from 256m, includes 2m @ 1.31% Sn from 256m (Fez?)
- 11m @ 0.99% Sn from 300m, including 3m @ 2.37% Sn from 305m (Meknes)
- 4.0m @ 2.37% Sn from 417m.
- Deeper intersections in AD105 and AD106 below Meknes may correlate with mineralisation in drill holes AD096, AD095D1 and AD100 (previously reported 29/06/11). Additional drilling up dip from AD105 and AD106 is required to permit interpretation of this data.
- Drilling continues at Achmmach with two rigs currently operational and three in transit to Morocco.

Managing Director Wayne Bramwell said;

“Achmmach is a big tin project. The company believes that the potential to link the resources in the west of the project to resources in the east is large and these latest results from the Gap continue to encourage us.

Kasbah has two diamond rigs running now and a significant increase in drilling productivity and data flow is expected once the additional 3 diamond rigs arrive on site.”

A handwritten signature in blue ink, appearing to read 'Wayne Bramwell'.

Wayne Bramwell
Managing Director

For further information please go to:

www.kasbahresources.com

Or email:

info@kasbahresources.com

The information in this report is based on information compiled by Mr. Jeffrey Lindhorst a Member of the Australasian Institute of Geoscientists. Mr. Lindhorst is a full-time employee of Kasbah Resources Limited and has sufficient experience which is relevant to the style of mineralisation and type of deposit under consideration and to the activity which he is undertaking to qualify as a Competent Person as defined in the 2004 Edition of the 'Australasian Code for Reporting of Exploration Results, Mineral Resources and Ore Reserves'. Mr. Lindhorst consents to the inclusion in the report of the matters based on this information in the form and context in which it appears.

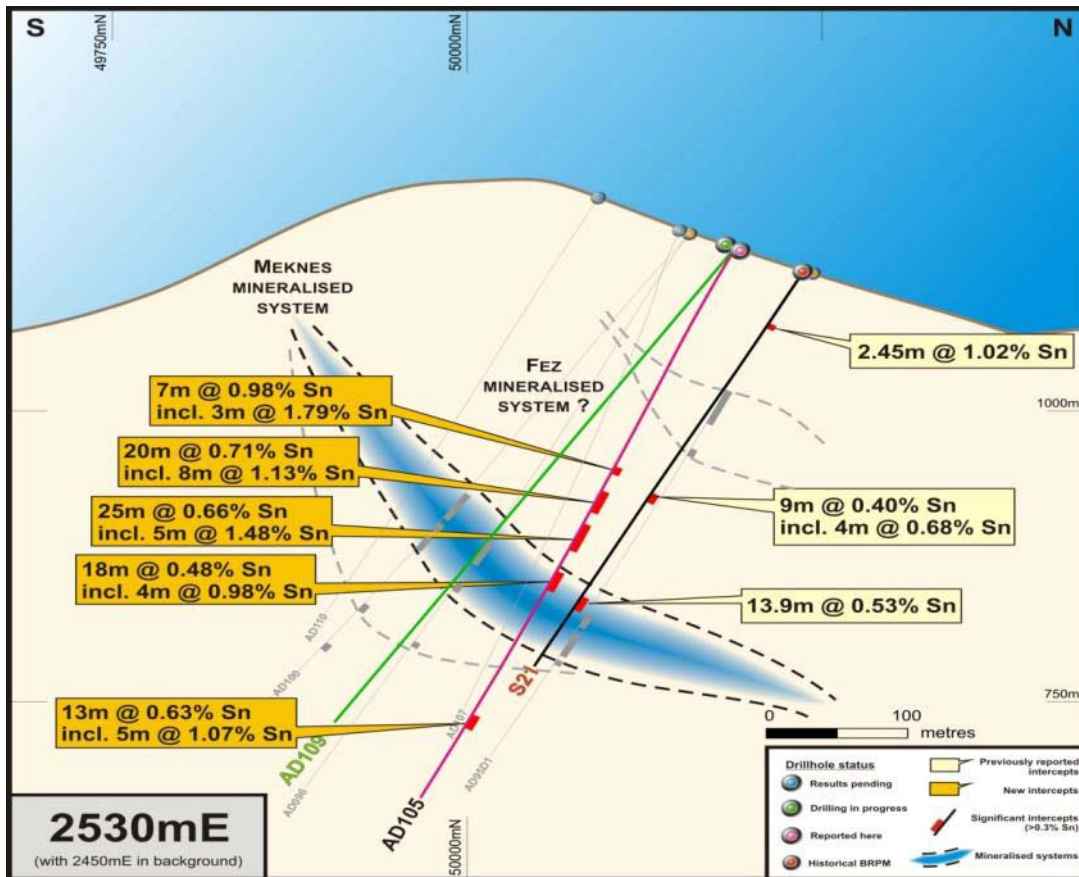


Figure 3: Cross section 2530mE (AD105)

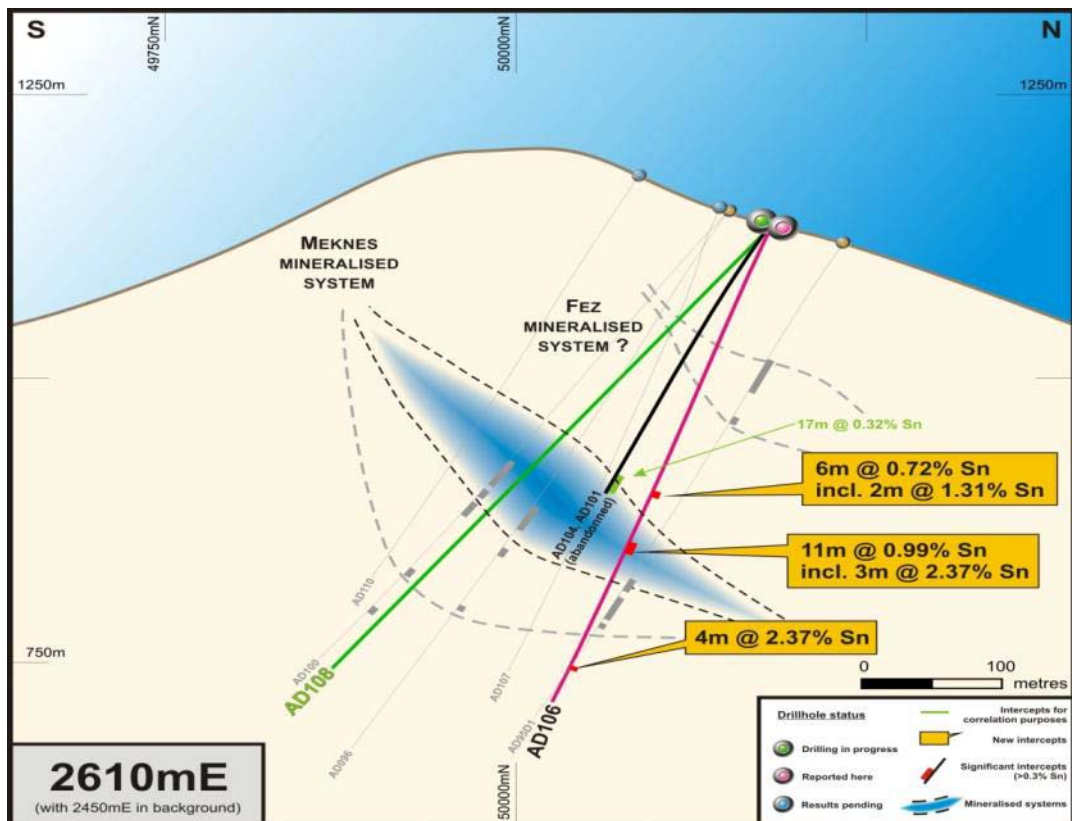


Figure 4: Cross section 2610mE (AD106)

Achmmach Tin Project - August 2010 Resource			
Category	M Tonnes	Sn %	Contained Tin (k tonnes)
Indicated	2.2	0.8	17
Inferred	4.8	0.8	37
Total	7.0	0.8	54

The information in this announcement that relates to Kasbah Resources Limited's mineral resource estimates for the Achmmach Project is based on information compiled by Michael Job, who is a full time employee of Quantitative Group and a Member of the Australasian Institute of Mining and Metallurgy. Michael Job has sufficient experience which is relevant to the style of mineralisation and type of deposit under consideration and to the activity which he is undertaking to qualify as a 'Competent Person' as defined in the 2004 JORC code. Michael Job consents to the inclusion in the announcement of the matters based on this information in the form and context in which it appears.

APPENDIX A: Meknes Trend Drilling Significant Intersections

Hole ID	Collar UTM 30N WGS84 N	Collar UTM 30N WGS84 E	From (m)	To (m)	Down-hole interval (m)	Tin %
AD105	3714860	243432	209	216	7	0.98
		includes	213	216	3	1.79
			232	252	20	0.71
		includes	241	249	8	1.13
			263	288	25	0.66
		includes	265	270	5	1.48
			308	326	18	0.48
		includes	316	320	4	0.98
			445	458	13	0.63
		includes	448	453	5	1.07
AD106	3714881	243510	252	258	6	0.72
		includes	256	258	2	1.31
			300	311	11	0.99
		includes	305	308	3	2.37
			417	421	4	2.37

^A significant intersections >100m below natural surface selection criteria:

≥ 0.3%Sn and ≥ 5m down-hole and ≤ 3m down-hole < 0.3%Sn included OR
 ≥ 0.3%Sn and ≥ 1.5 %Tin-metres metal accumulation down-hole and ≤ 3m down-hole < 0.3%Sn included